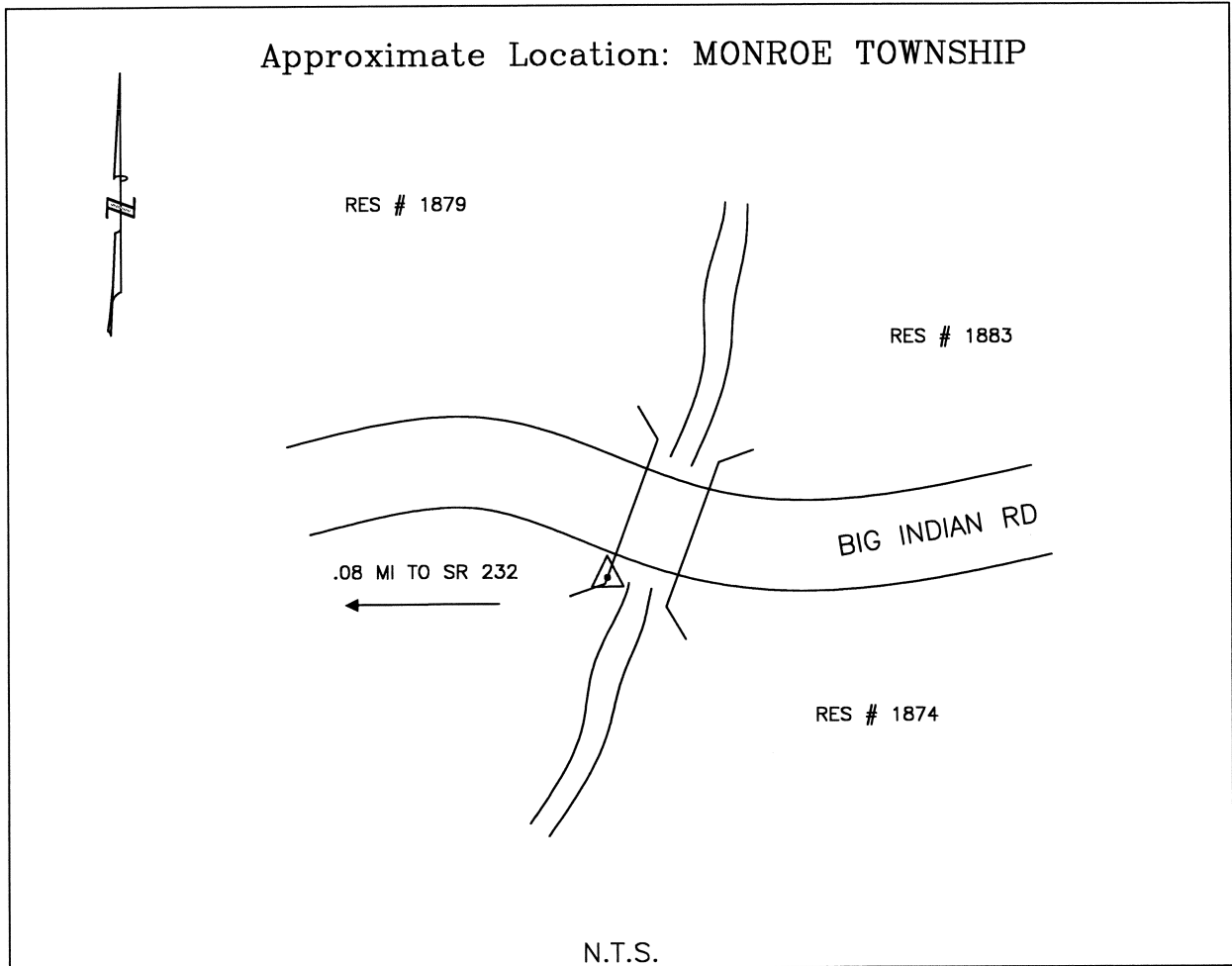




CLERMONT COUNTY ENGINEER

CONTROL STATION DATA SHEET

Approximate Location: MONROE TOWNSHIP



Station Name: 815

NAD 1983
 State Plane Zone: Ohio South 3402
 Latitude (dms) N 38 53 30.70430
 Longitude (dms) W 84 12 24.00633
 Easting in meters 451945.547
 Northing in meters 100408.111
 Easting in US survey ft 1482758.015
 Northing in US survey ft 329422.276
 Scale 0.99997261
 Convergence -1 4 58

NAVD 1988
 Elevation in meters 159.186
 Elevation in feet 522.264
 Geoid Ht in meters -33.997
 Elevations determined with GPS