

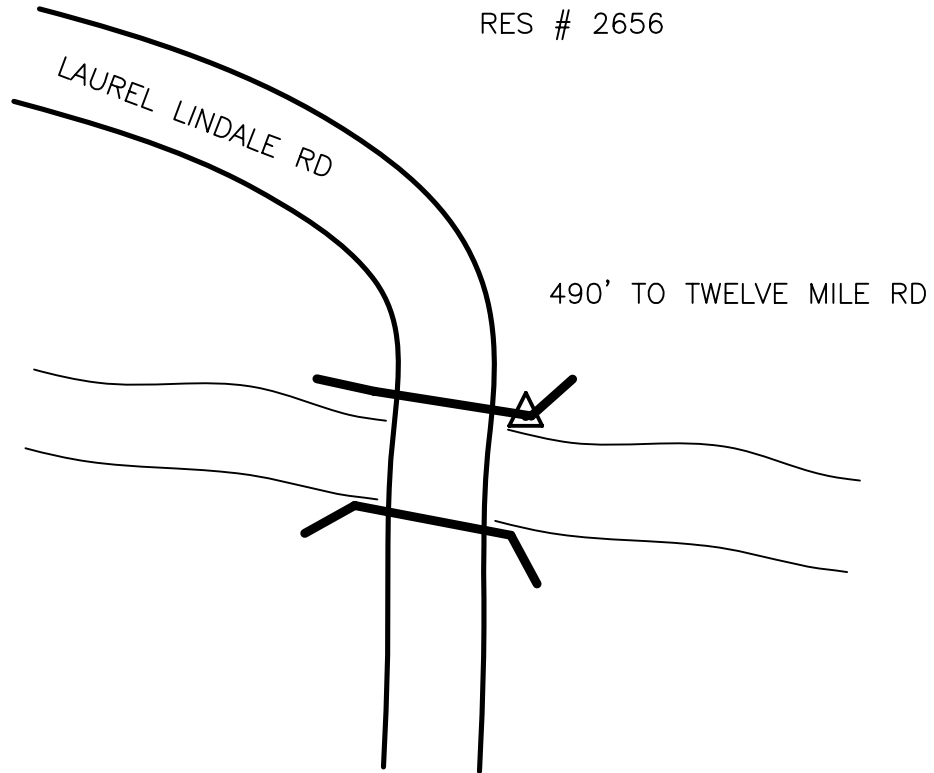


# CLERMONT COUNTY ENGINEER CONTROL STATION DATA SHEET

Approximate Location: MONROE TOWNSHIP



RES # 2656



Station Name: 877

**NAD 1983**

State Plane Zone: Ohio South 3402  
 Latitude (dms) N 38 58 04.26657  
 Longitude (dms) W 84 12 03.81443  
 Easting in meters 452590.965  
 Northing in meters 108833.067  
 Easting in US survey ft 1484875.523  
 Northing in US survey ft 357063.155  
 Scale 0.99996182  
 Convergence -1 05 55

**NAVD 1988**

Elevation in meters 216.979  
 Elevation in feet 711.872  
 Geoid Ht in meters -33.948  
 Elevations determined with GPS