



CLERMONT COUNTY ENGINEER'S OFFICE

Jeremy Evans, P.E., P.S.
Clermont County Engineer

June 8, 2026

Board of County Commissioners
101 East Main Street
Batavia, OH 45103

RE: Chapel Road Drainage Improvements Detour (06-22-26 to 06-26-26)
Batavia Township

Dear Commissioners:

Pursuant to Section 5543.17 of the Ohio Revised Code, I have determined that a road closure is necessary on Chapel Road, as it is impractical to construct a temporary highway, culvert, or bridge. The closures are necessary for our crews to replace and repair culverts, perform drainage improvements, and complete berm work along the roadway. Berm work performed during this closure will only be completed in areas not affected by the upcoming water main replacement. Crews will return following the water main installation to complete the remaining berm work improvements.

The first closure is located at the intersection of Apple Road and Chapel Road. Crews will begin working at that location. Once work is completed, they will move east to the next closure along the road. **Chapel Road will be closed to through traffic from 7AM to 5PM beginning Monday, June 22, 2026, through Friday, June 26, 2026.** The length of the detour is approximately 3.95 miles or 20,851 feet.

The Office of the Clermont County Engineer shall notify the Communication Center and other affected agencies. All advanced warning and detour signs will be erected and maintained for this project. Our crews will maintain all detour signage throughout the project. **Attached is the recommended detour.**

If you have questions or need additional information, please contact Mark Schlosser at 513-732-8857.

Sincerely,

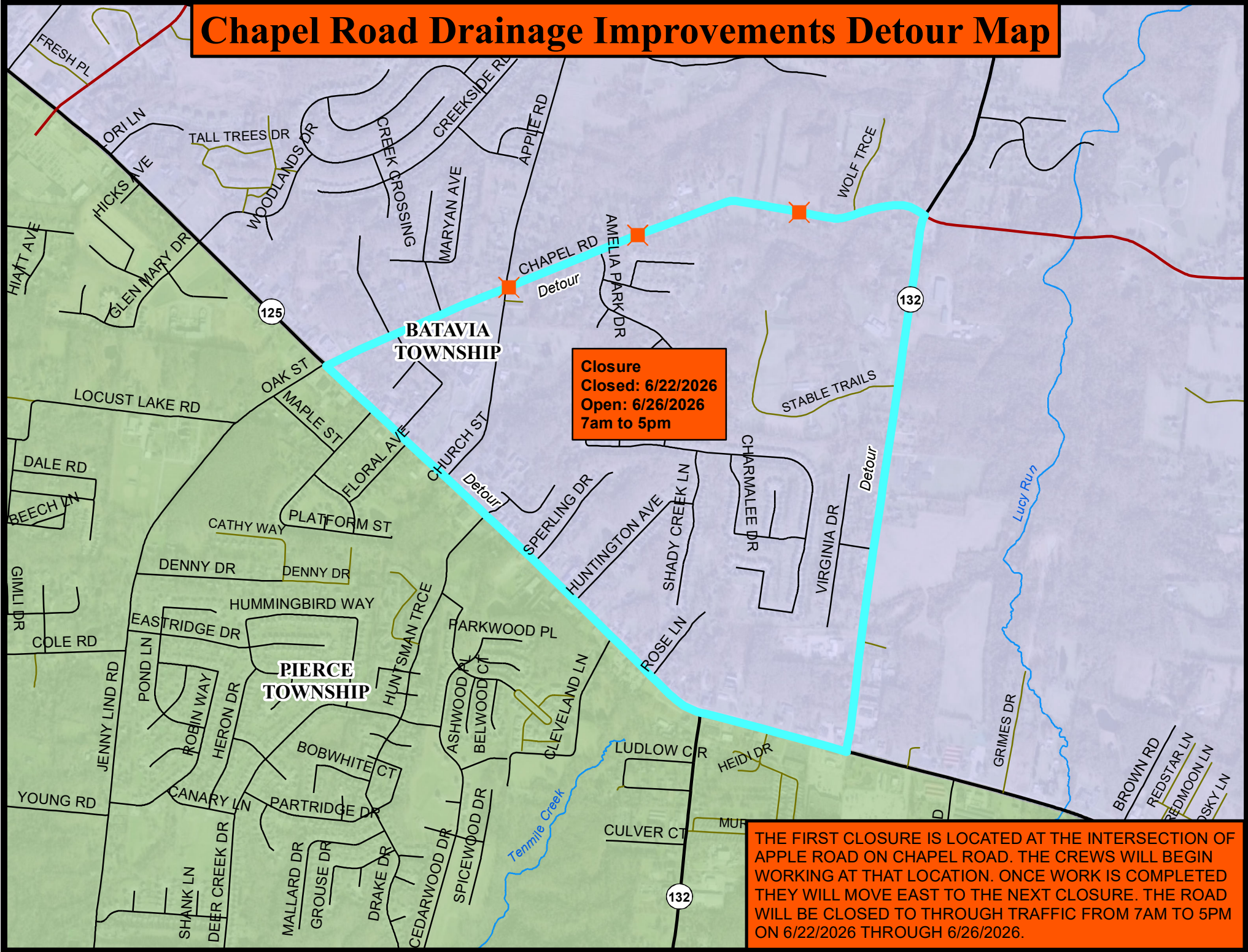
A handwritten signature in blue ink, appearing to read "Jeremy P. Evans".

Jeremy P. Evans, P.E., P.S.
County Engineer

JPE: sw

cc: Communication Center
Batavia Township
Batavia Township Fire/EMS
West Clermont Local School District
BCC
CTC
Sheriff
State Highway Patrol
CCEO Staff
Hwy Ops Staff
CC Office of Public Information

Chapel Road Drainage Improvements Detour Map



Closure
Closed: 6/22/2026
Open: 6/26/2026
7am to 5pm

THE FIRST CLOSURE IS LOCATED AT THE INTERSECTION OF APPLE ROAD ON CHAPEL ROAD. THE CREWS WILL BEGIN WORKING AT THAT LOCATION. ONCE WORK IS COMPLETED THEY WILL MOVE EAST TO THE NEXT CLOSURE. THE ROAD WILL BE CLOSED TO THROUGH TRAFFIC FROM 7AM TO 5PM ON 6/22/2026 THROUGH 6/26/2026.