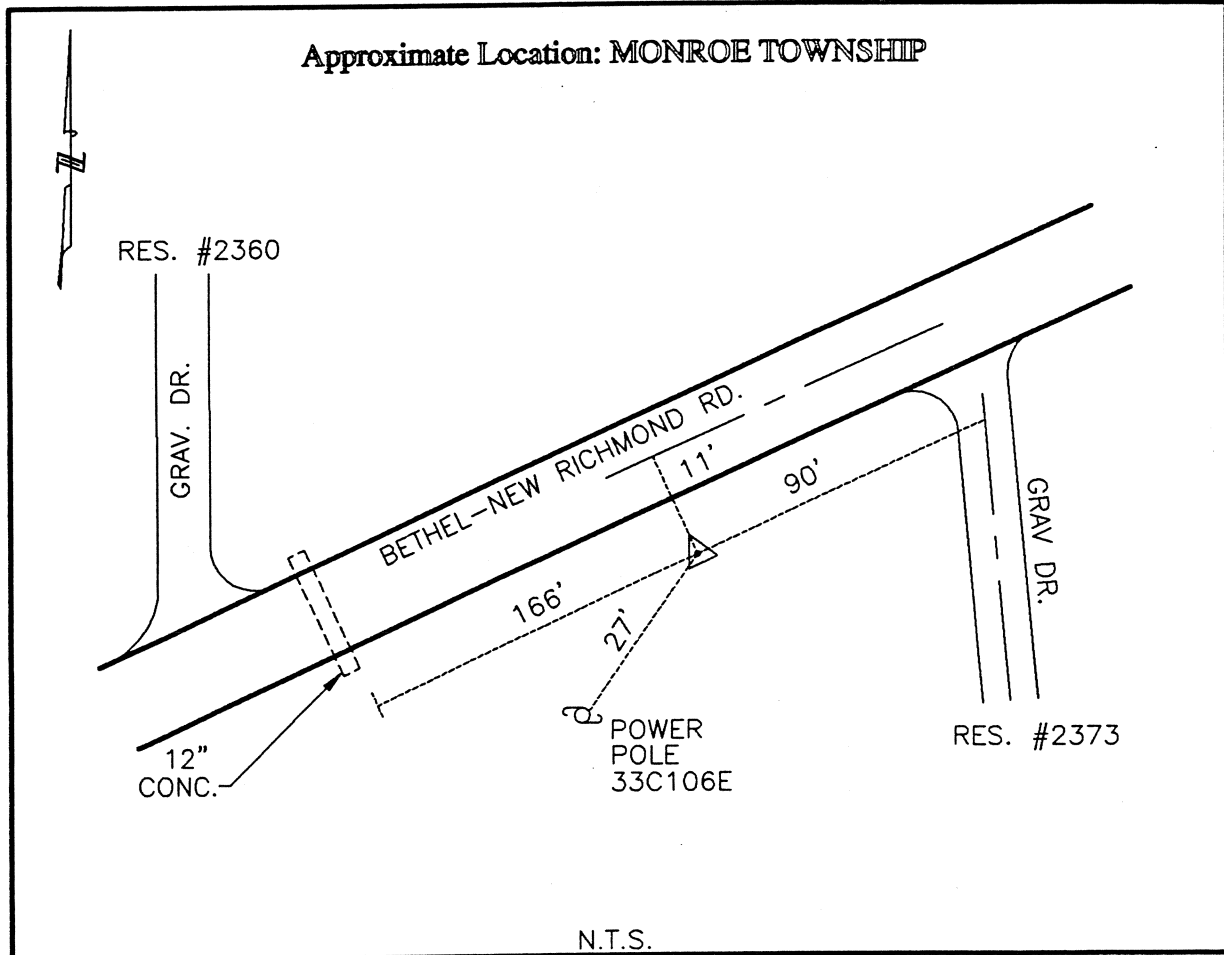




CLERMONT COUNTY ENGINEER
CONTROL STATION DATA SHEET



Station Name: 111

NAD 1983 (First Order)

State Plane Zone: Ohio South 3402
 Latitude (dms) N 38 57 23.51290
 Longitude (dms) W 84 09 30.14257
 Easting in meters 456266.568
 Northing in meters 107507.777
 Easting in US survey ft 1496934.565
 Northing in US survey ft 352715.098
 Scale .99996360
 Convergence (dms) -1 3 8.172098

NAVD 1988

Elevation in meters 275.848
 Elevation in feet 905.011
 Geoid Ht. in meters -34.130
 Elevations determined with GPS

Azimuth: S 75° 14' 49" W to Station 111A.