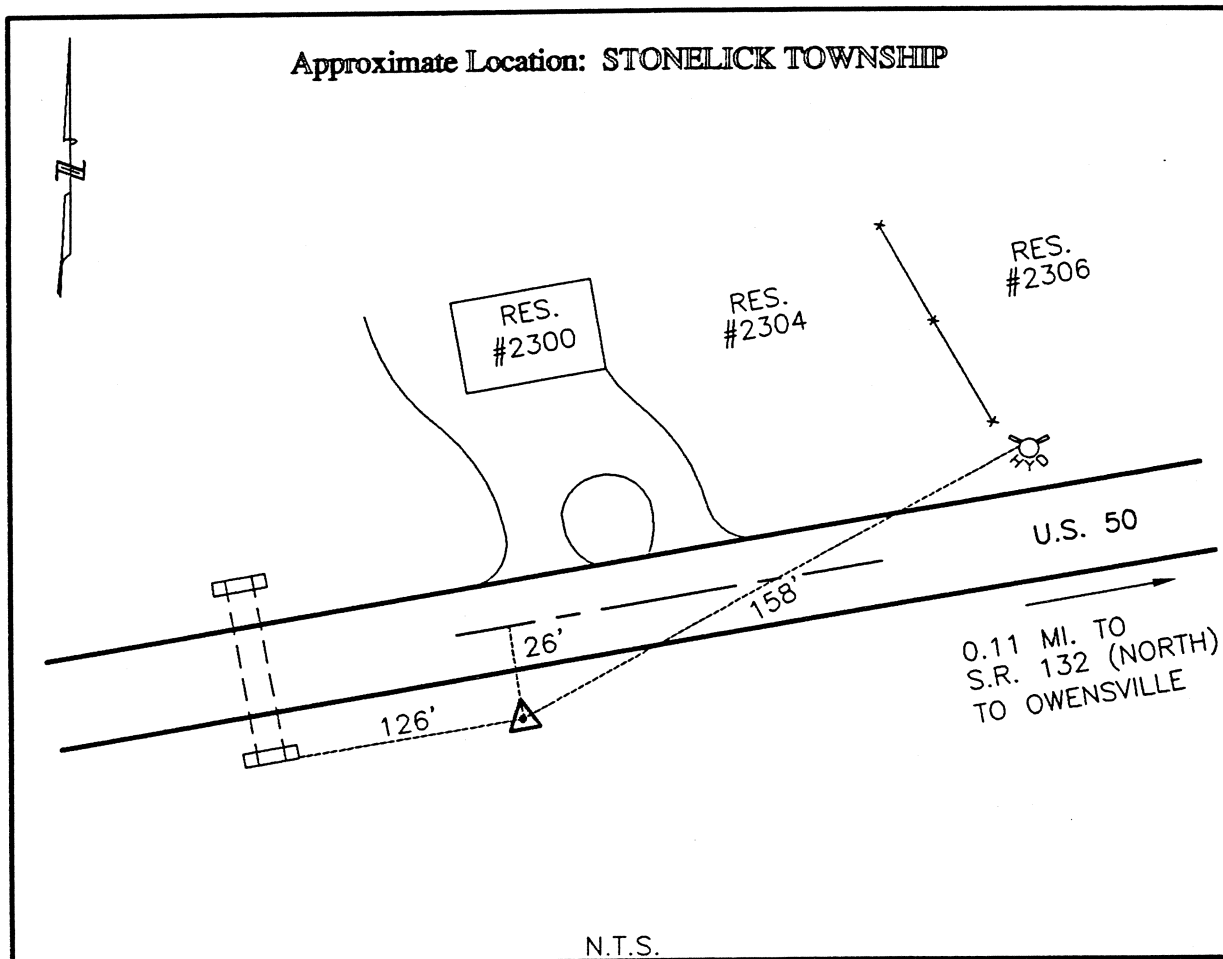




# CLERMONT COUNTY ENGINEER CONTROL STATION DATA SHEET

Approximate Location: STONELICK TOWNSHIP



Station Name: 121

NAD 1983 (First Order)  
 State Plane Zone: Ohio South 3402  
 Latitude (dms) N 39 07 16.68380  
 Longitude (dms) W 84 08 41.25234  
 Easting in meters 457776.648  
 Northing in meters 125774.488  
 Easting in US survey ft 1501888.886  
 Northing in US survey ft 412645.133  
 Scale .99994640  
 Convergence (dms) -1 2 37.150292

NAVD 1988  
 Elevation in meters 266.103  
 Elevation in feet 873.040  
 Geoid Ht. in meters -34.039  
 Elevations determined with GPS

Azimuth: S 85° 45' 50" W to Station 121A.