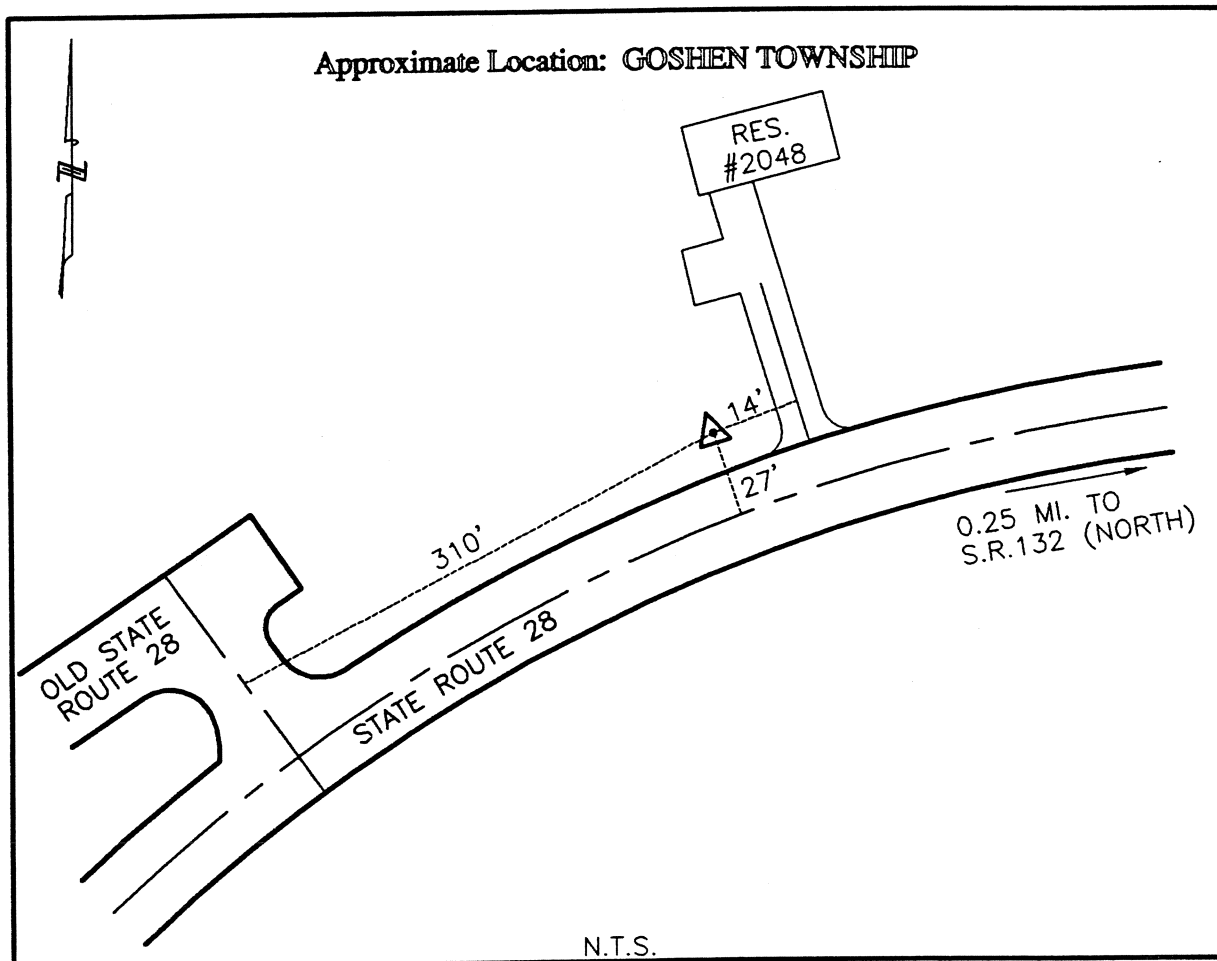




CLERMONT COUNTY ENGINEER
CONTROL STATION DATA SHEET



Station Name: 124

NAD 1983 (First Order)

State Plane Zone: Ohio South 3402
 Latitude (dms) N 39 14 33.98101
 Longitude (dms) W 84 08 51.10436
 Easting in meters 457786.062
 Northing in meters 139261.412
 Easting in US survey ft 1501919.772
 Northing in US survey ft 456893.483
 Scale .99993900
 Convergence (dms) -1 2 43.401591

NAVD 1988

Elevation in meters 259.267
 Elevation in feet 850.612
 Geoid Ht. in meters -33.914
 Elevations determined with GPS

Azimuth: N 66° 11' 13" E to Station 124A.