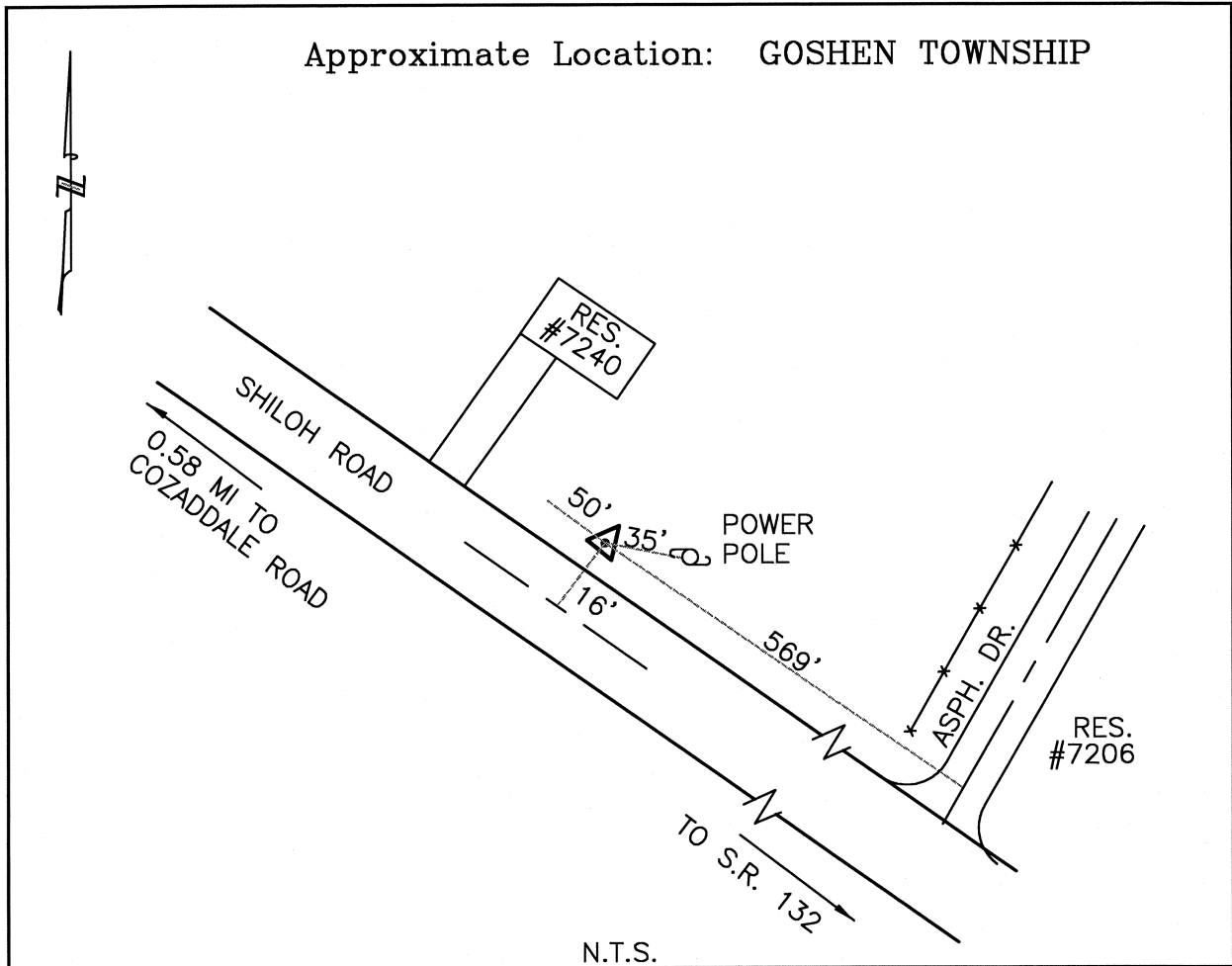




CLERMONT COUNTY ENGINEER

CONTROL STATION DATA SHEET

Approximate Location: GOSHEN TOWNSHIP



Station Name: 125

NAD 1983 (First Order)
 State Plane Zone: Ohio South 3402
 Latitude (dms) N 39 15 32.55048
 Longitude (dms) W 84 08 52.59600
 Easting in meters 457783.259
 Northing in meters 141067.875
 Easting in US survey ft 1501910.576
 Northing in US survey ft 462820.187
 Scale .99993830
 Convergence (dms) -1 2 44.348066

NAVD 1988
 Elevation in meters 264.047
 Elevation in feet 866.294
 Geoid Ht. in meters -33.893
 Elevations determined with GPS

Azimuth: S 42' 23' 38" E to Station 125ARESET