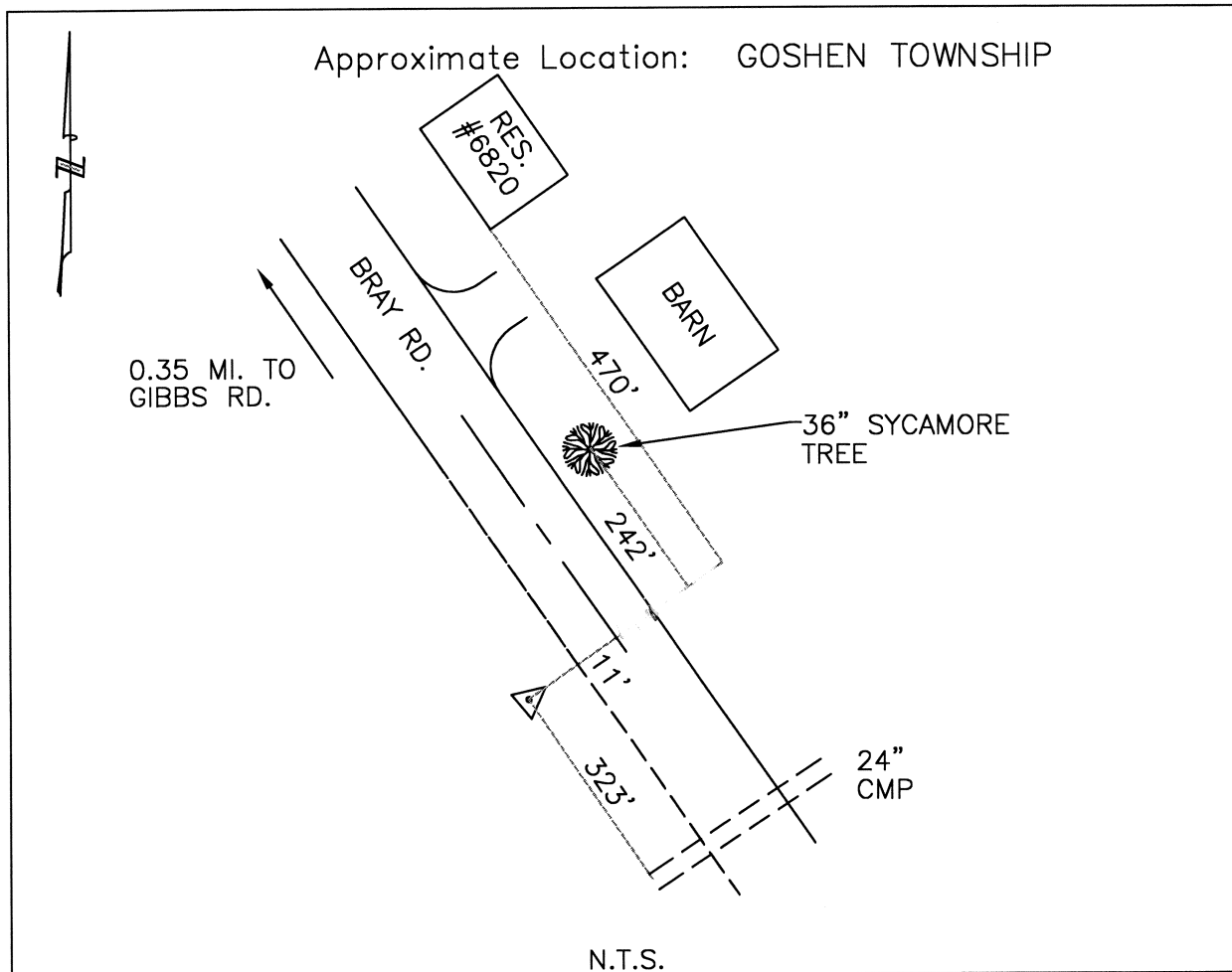




CLERMONT COUNTY ENGINEER

CONTROL STATION DATA SHEET



Station Name: 127

NAD 1983 (First Order)

State Plane Zone: Ohio South 3402
 Latitude (dms) N 39 13 58.83951
 Longitude (dms) W 84 07 45.67021
 Easting in meters 459335.295
 Northing in meters 138149.461
 Easting in US survey ft 1507002.547
 Northing in US survey ft 453245.357
 Scale .99993940
 Convergence (dms) -1 2 1.882345

NAVD 1988

Elevation in meters 262.309
 Elevation in feet 860.592
 Geoid Ht. in meters -33.898
 Elevations determined with GPS

Azimuth: S 30° 32' 47" E to Station 127ARESET.