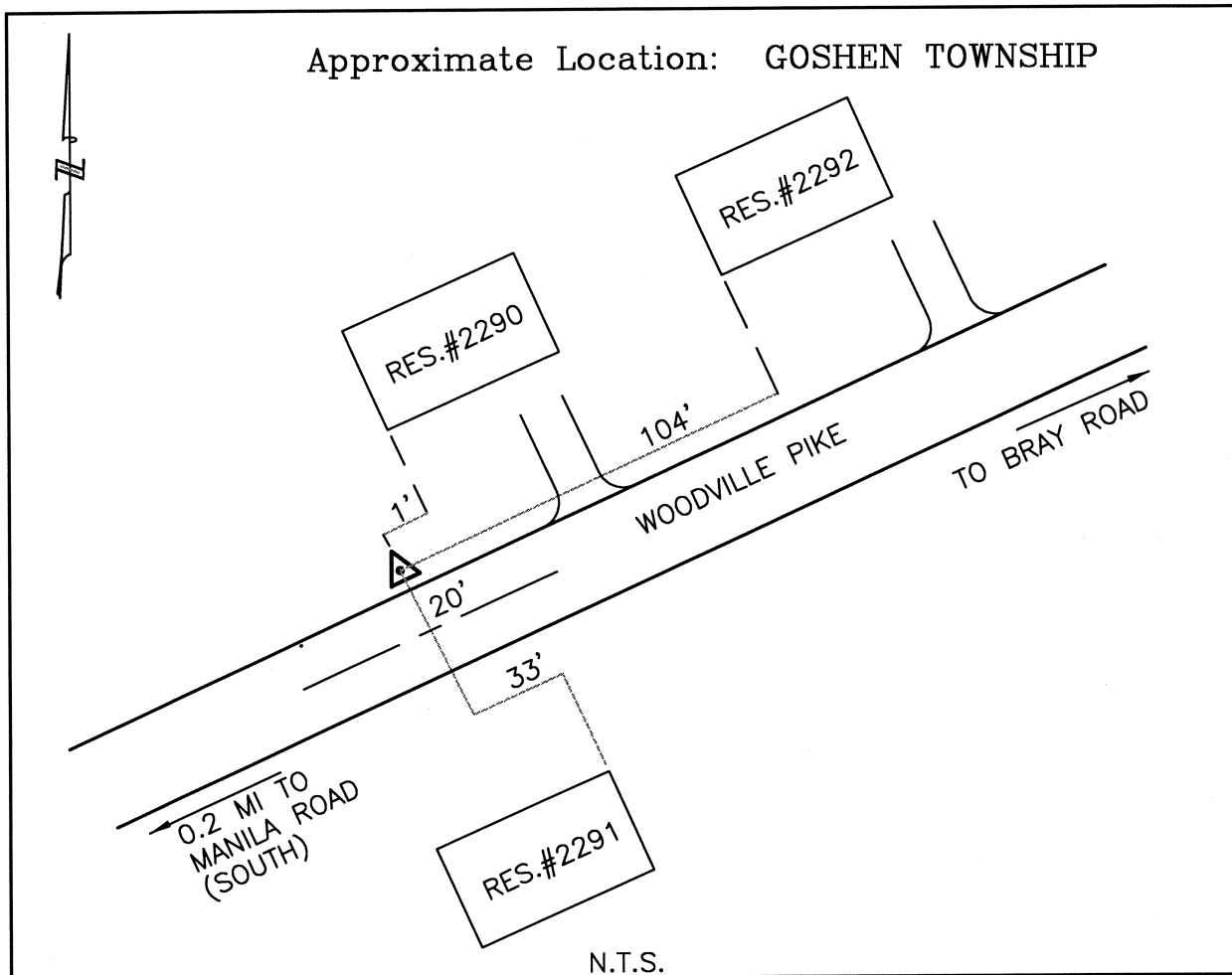




CLERMONT COUNTY ENGINEER

CONTROL STATION DATA SHEET



Station Name: 128

NAD 1983 (First Order)

State Plane Zone: Ohio South 3402
 Latitude (dms) N 39 13 5.25048
 Longitude (dms) W 84 07 44.07069
 Easting in meters 459343.840
 Northing in meters 136496.515
 Easting in US survey ft 1507030.582
 Northing in US survey ft 447822.316
 Scale .99994010
 Convergence (dms) -1 2 0.867418

NAVD 1988

Elevation in meters 262.324
 Elevation in feet 860.641
 Geoid Ht. in meters -33.916
 Elevations determined with GPS

Azimuth: N 67° 40' 44" E to Station 128A.