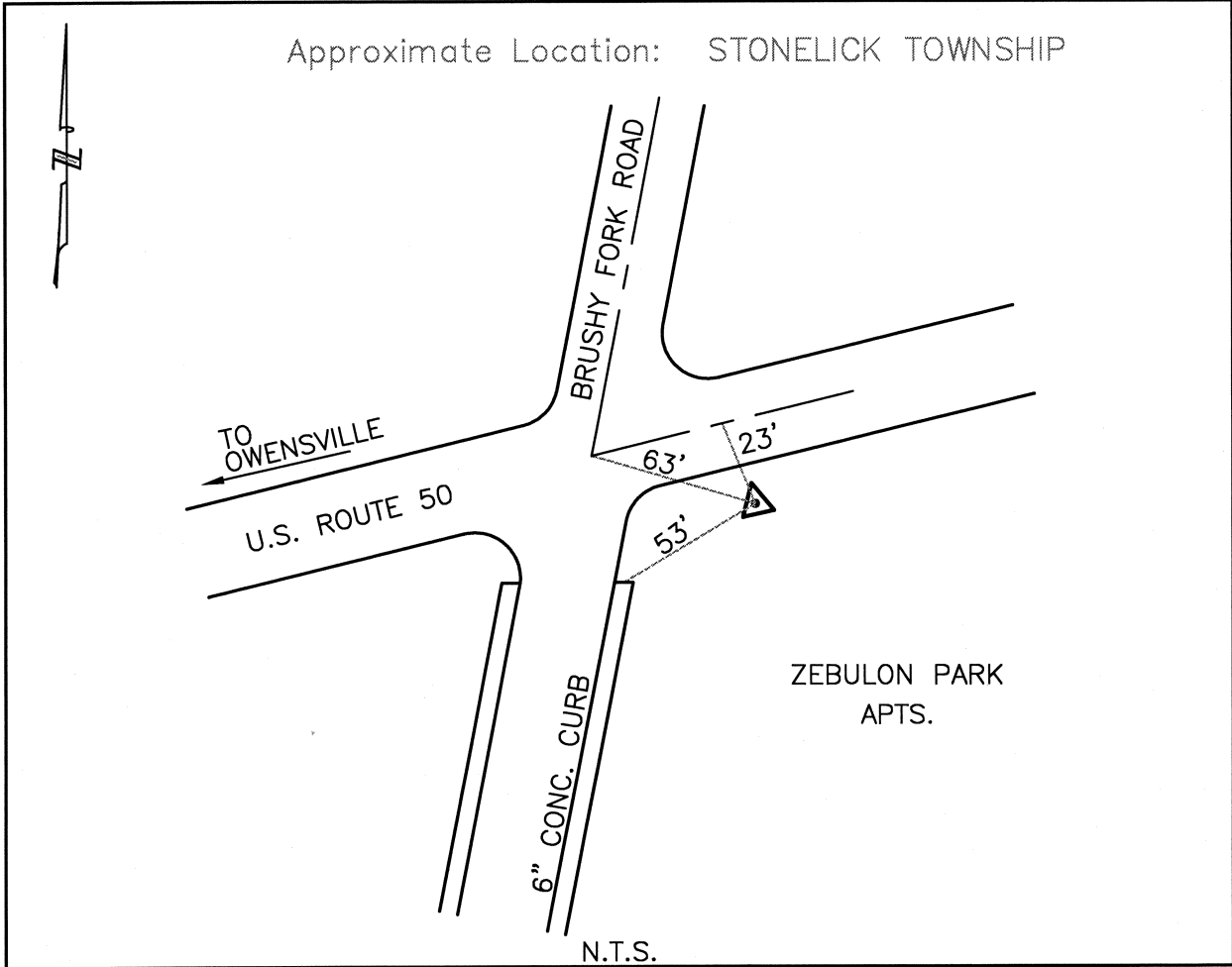




CLERMONT COUNTY ENGINEER  
CONTROL STATION DATA SHEET



Station Name: 131

NAD 1983 (First Order)

State Plane Zone: Ohio South 3402  
 Latitude (dms) N 39 07 28.02869  
 Longitude (dms) W 84 07 36.98151  
 Easting in meters 459326.513  
 Northing in meters 126096.302  
 Easting in US survey ft 1506973.735  
 Northing in US survey ft 413700.951  
 Scale .99994610  
 Convergence (dms) -1 1 56.369195

NAVD 1988

Elevation in meters 263.849  
 Elevation in feet 865.645  
 Geoid Ht. in meters -34.008  
 Elevations determined with GPS

Azimuth: N 75° 12' 25" E to Station 131A.