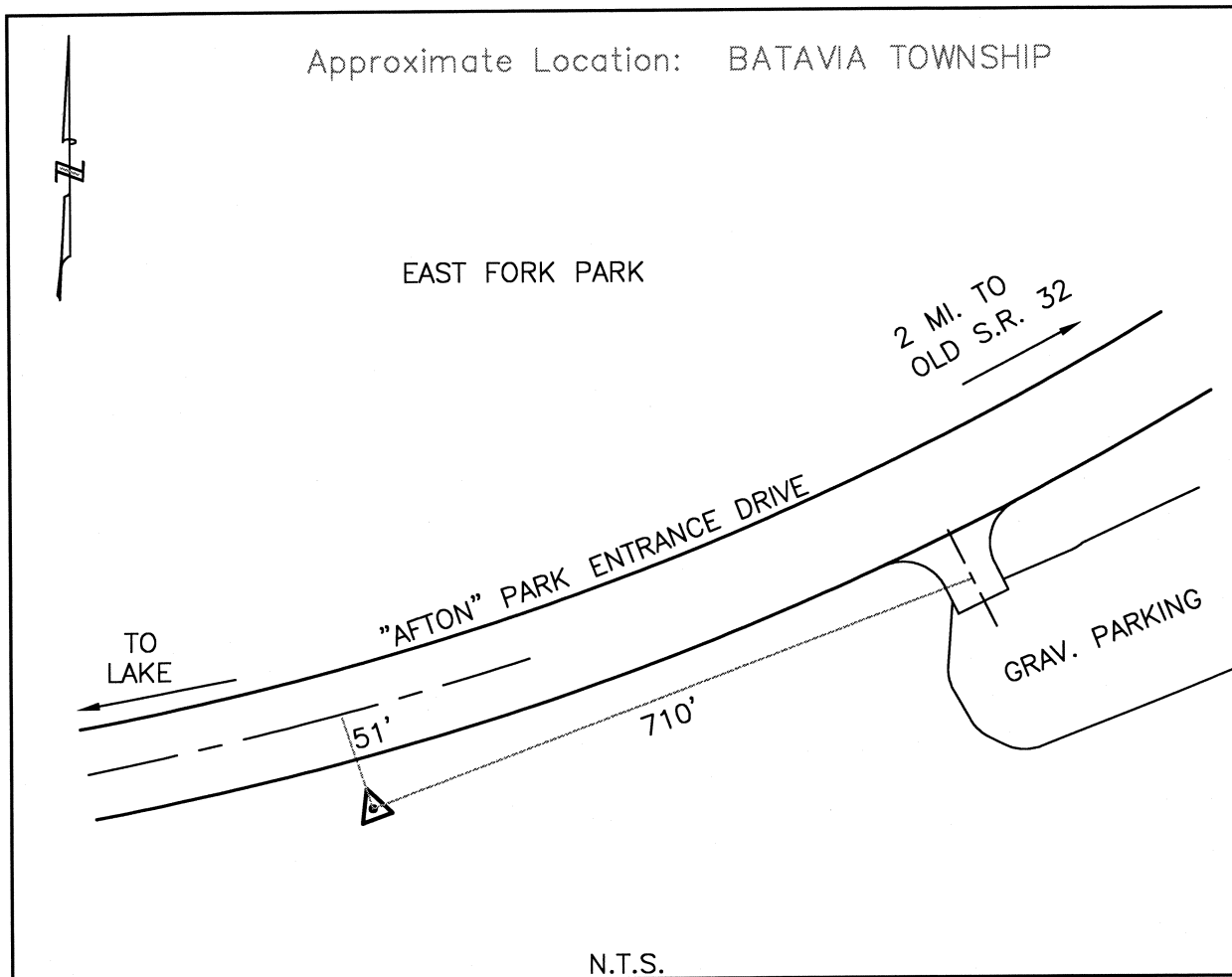




CLERMONT COUNTY ENGINEER CONTROL STATION DATA SHEET



Station Name: 136

NAD 1983 (First Order)

State Plane Zone: Ohio South 3402
 Latitude (dms) N 39 02 17.79793
 Longitude (dms) W 84 07 26.87533
 Easting in meters 459397.161
 Northing in meters 116527.043
 Easting in US survey ft 1507205.519
 Northing in US survey ft 382305.807
 Scale .99995400
 Convergence (dms) -1 1 49.956626

NAVD 1988

Elevation in meters 262.063
 Elevation in feet 859.785
 Geoid Ht. in meters -34.053
 Elevations determined with GPS

Azimuth: N 50° 04' 07" E to Station 136A.