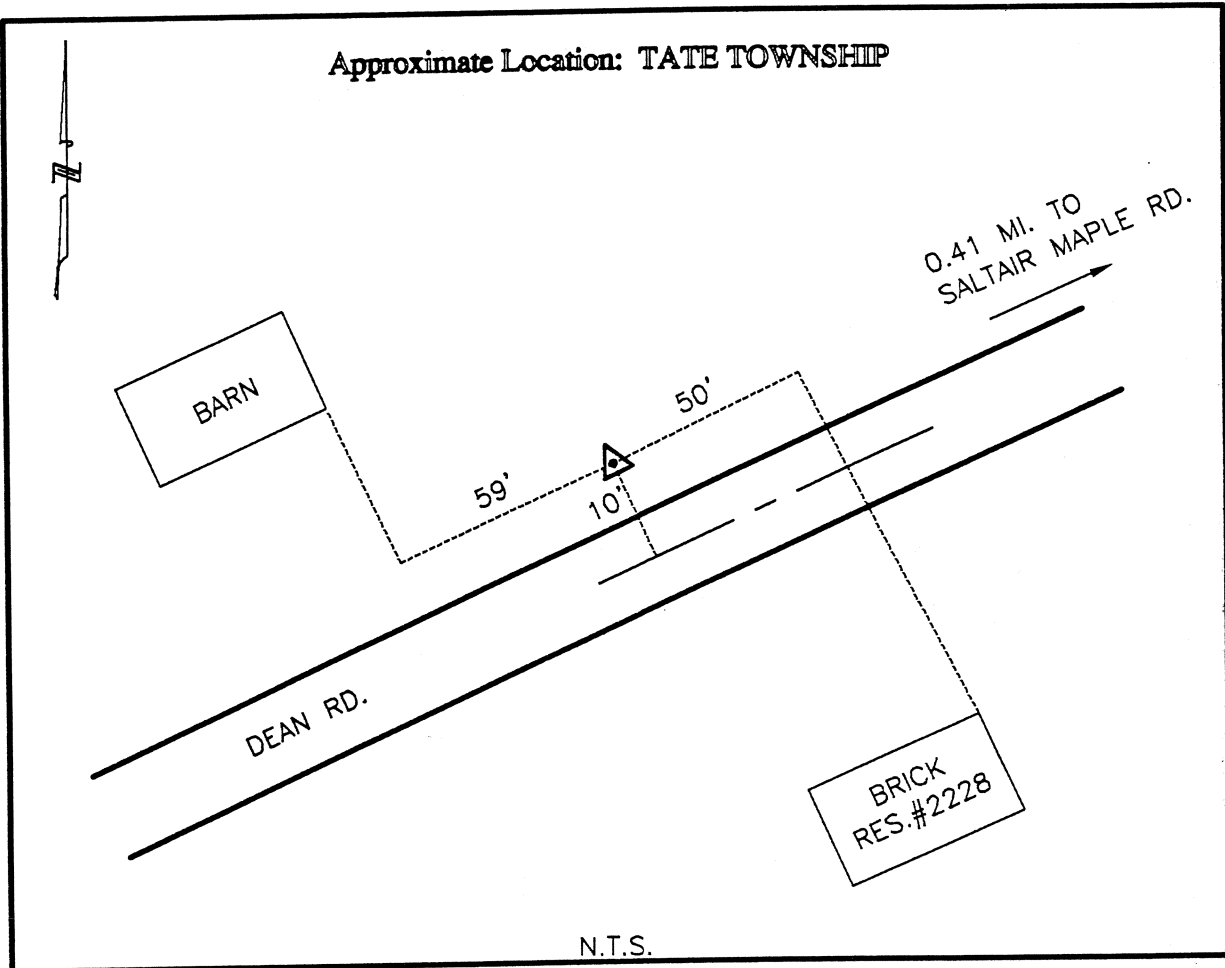




CLERMONT COUNTY ENGINEER
CONTROL STATION DATA SHEET



Station Name: 138

NAD 1983 (First Order)

State Plane Zone: Ohio South 3402
 Latitude (dms) N 38 55 56.3803 4
 Longitude (dms) W 84 07 20.0305 6
 Easting in meters 459350.45 5
 Northing in meters 104764.46 4
 Easting in US survey ft 1507052.28 4
 Northing in US survey ft 343714.74 6
 Scale .9999669 0
 Convergence (dms) -1 1 45.61348 6

NAVD 1988

Elevation in meters 276.903
 Elevation in feet 908.473
 Geoid Ht. in meters -34.094
 Elevations determined with GPS

Azimuth: N 47° 08' 28" E to Station 138A.