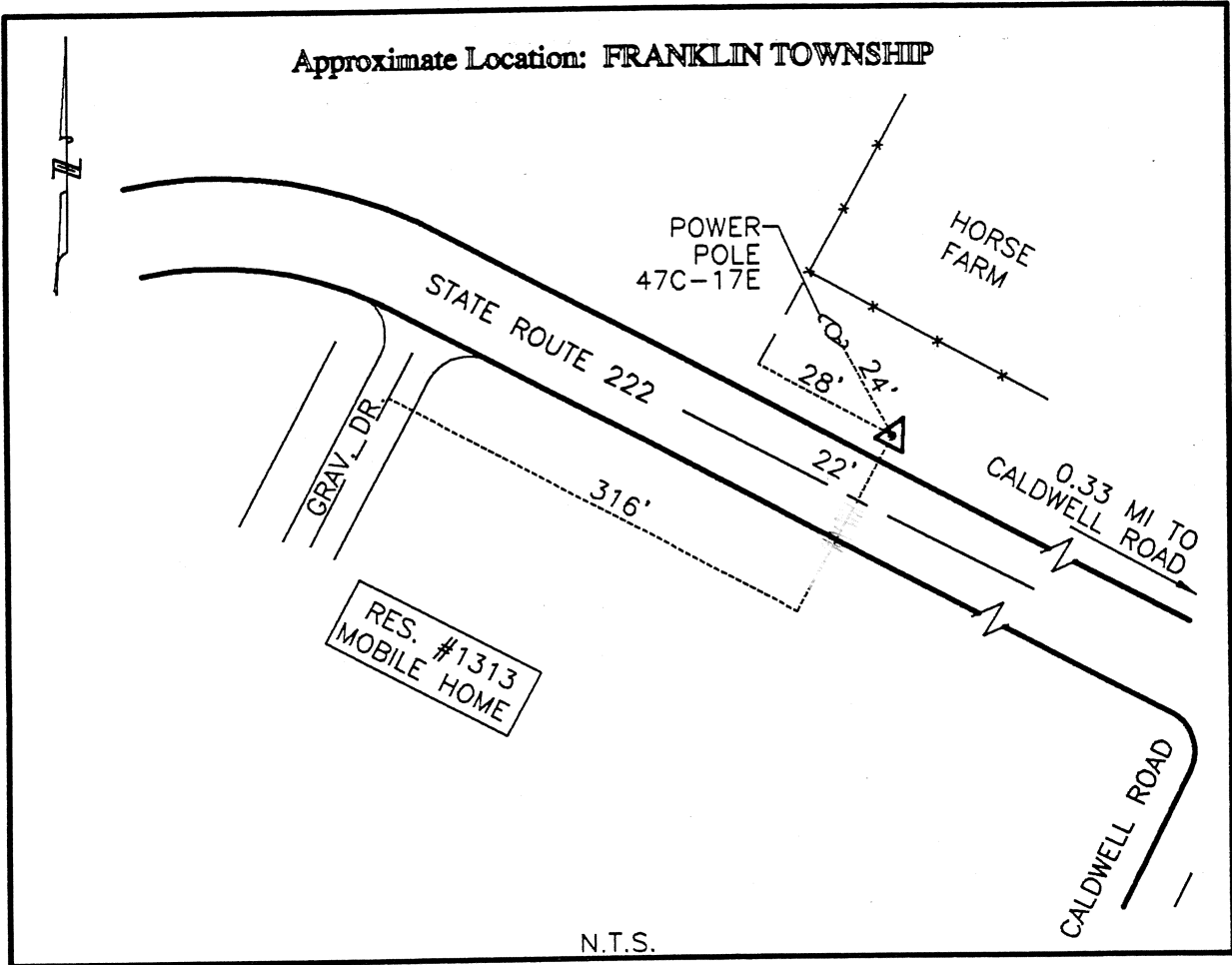




CLERMONT COUNTY ENGINEER
CONTROL STATION DATA SHEET



Station Name: 139

NAD 1983 (First Order)
 State Plane Zone: Ohio South 3402
 Latitude (dms) N 38 52 12.11 131
 Longitude (dms) W 84 07 23.91 256
 Easting in meters 459132.655
 Northing in meters 97851.652
 Easting in US survey ft 1506337.719
 Northing in US survey ft 321034.962
 Scale .99997590
 Convergence (dms) -1 1 48.076691

NAVD 1988
 Elevation in meters 258.485
 Elevation in feet 848.046
 Geoid Ht. in meters -34.121
 Elevations determined with GPS

Azimuth: S 41° 13' 16" E to Station 139A.