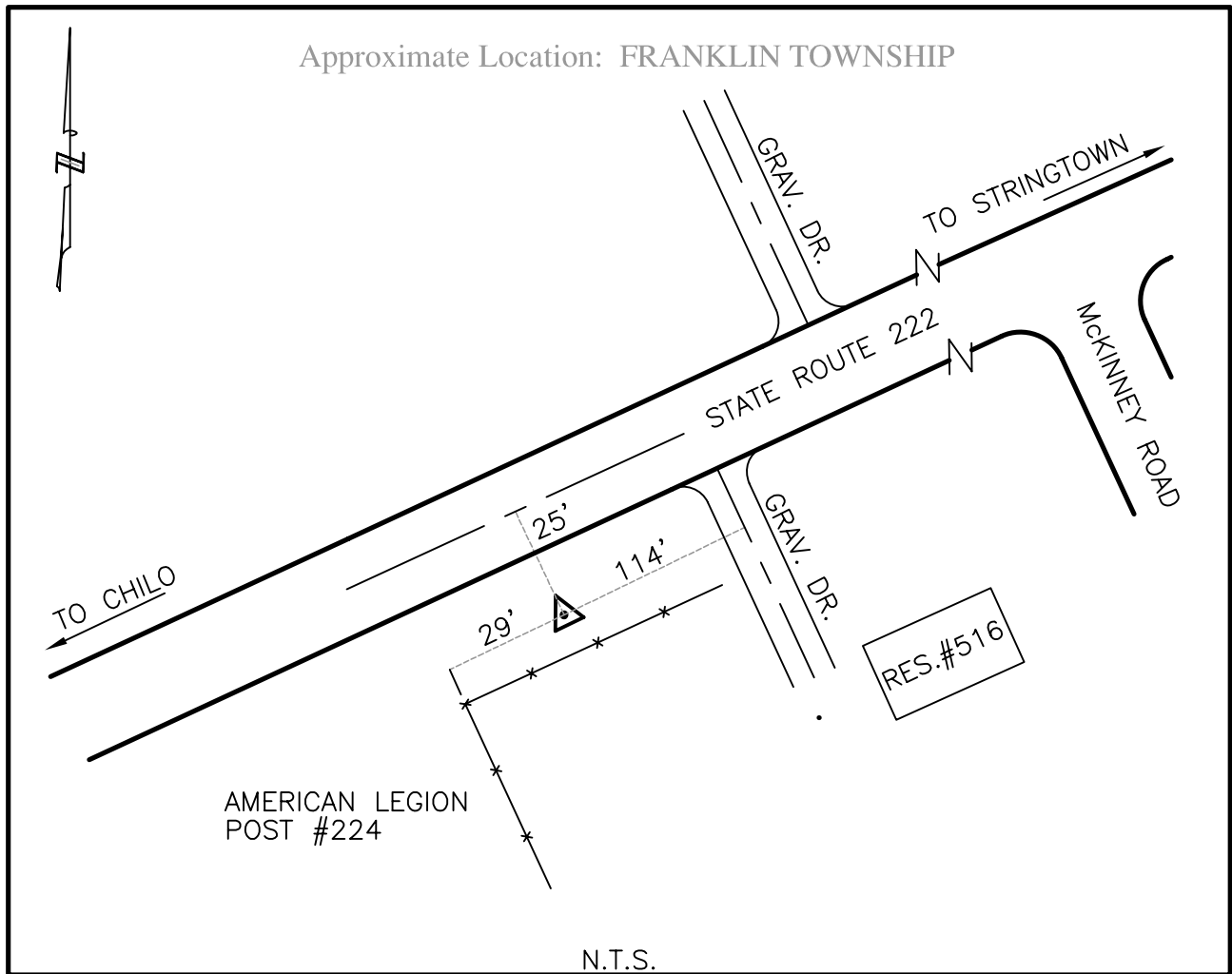




CLERMONT COUNTY ENGINEER

CONTROL STATION DATA SHEET



Station Name: 140

NAD 1983 (First Order)

State Plane Zone: Ohio South 3402
 Latitude (dms) N 38 48 46.23654
 Longitude (dms) W 84 07 12.05838
 Easting in meters 459304.480
 Northing in meters 91499.148
 Easting in US survey ft 1506901.448
 Northing in US survey ft 300193.455
 Scale .99998530
 Convergence (dms) -1 1 40.554982

NAVD 1988

Elevation in meters 269.005
 Elevation in feet 882.561
 Geoid Ht. in meters -34.149
 Elevations determined with GPS

Azimuth: N 53° 49' 08" E to Station 140A.