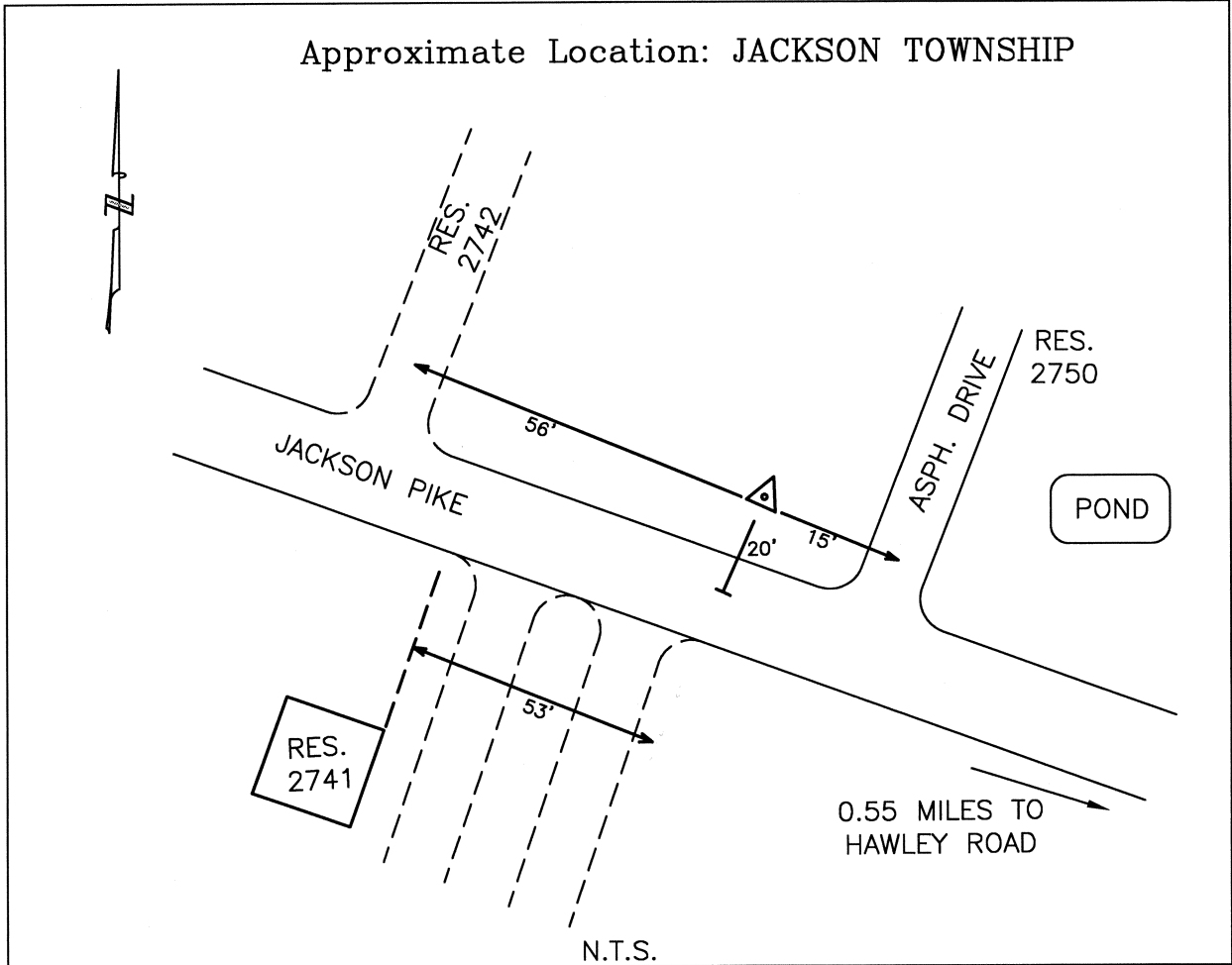




CLERMONT COUNTY ENGINEER

CONTROL STATION DATA SHEET

Approximate Location: JACKSON TOWNSHIP



Station Name: 145RESET

NAD 1983
 State Plane Zone: Ohio South 3402
 Latitude (dms) N 39 06 33.51243
 Longitude (dms) W 84 06 26.86990
 Easting in meters 460980.356
 Northing in meters 124385.313
 Easting in US survey ft 1512399.716
 Northing in US survey ft 408087.481
 Scale 0.99994737
 Convergence -1 1 11.882010

NAVD 1988
 Elevation in meters 273.352
 Elevation in feet 896.822
 Geoid96 Ht in meters -33.770
 Elevations determined with GPS

Azimuth: S.74°39'09"E. to Station 145A