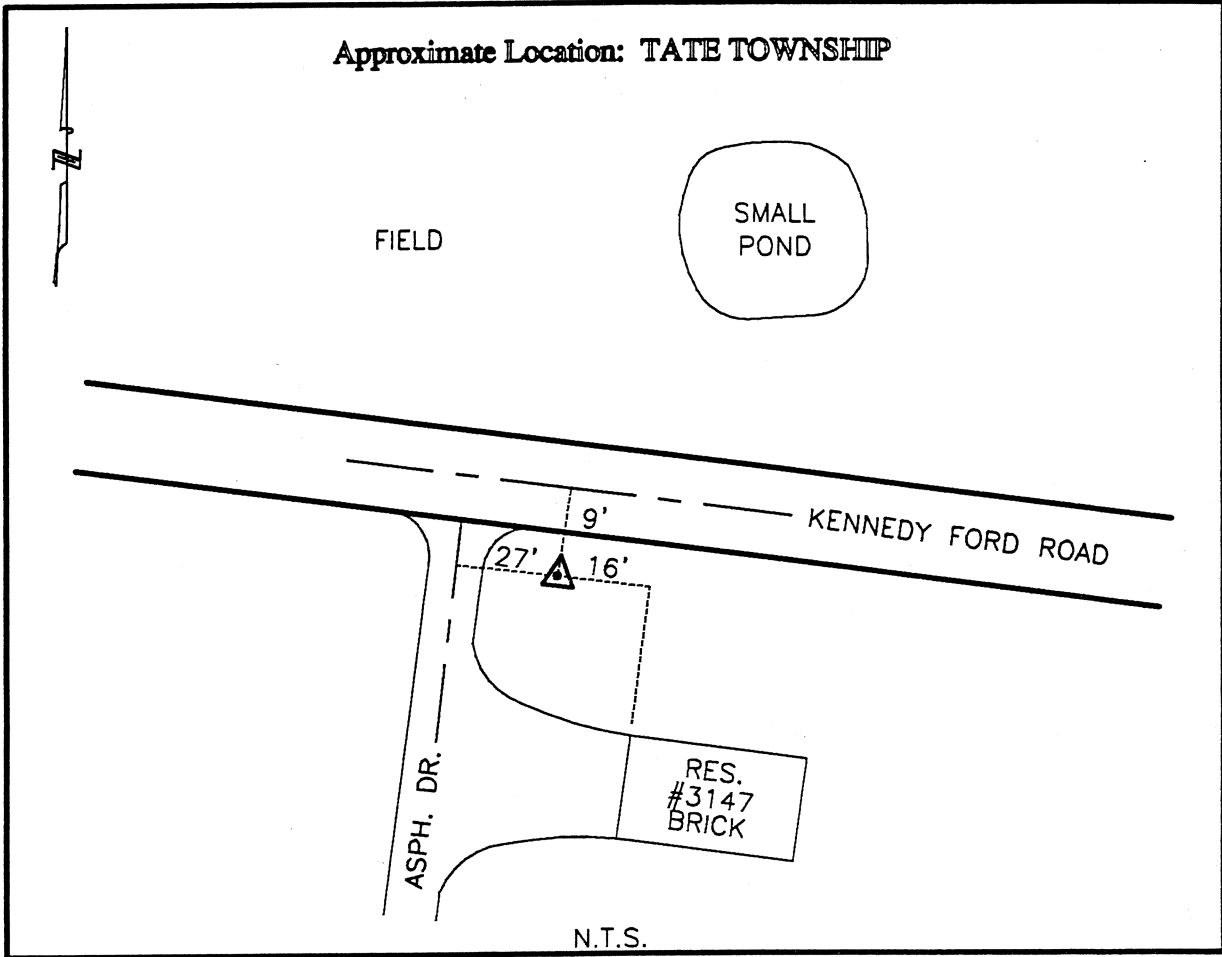




CLERMONT COUNTY ENGINEER
CONTROL STATION DATA SHEET



Station Name: 155

NAD 1983 (First Order)

State Plane Zone: Ohio South 3402
 Latitude (dms) N 38 58 20.1875 8
 Longitude (dms) W 84 05 15.1972 7
 Easting in meters 462434.550
 Northing in meters 109144.824
 Easting in US survey ft 1517170.686
 Northing in US survey ft 358085.977
 Scale .99996160
 Convergence (dms) -1 0 26.404324

NAVD 1988

Elevation in meters 266.872
 Elevation in feet 875.563
 Geoid Ht. in meters -34.024
 Elevations determined with GPS

Azimuth: N 58° 42' 21" W to Station 155A.