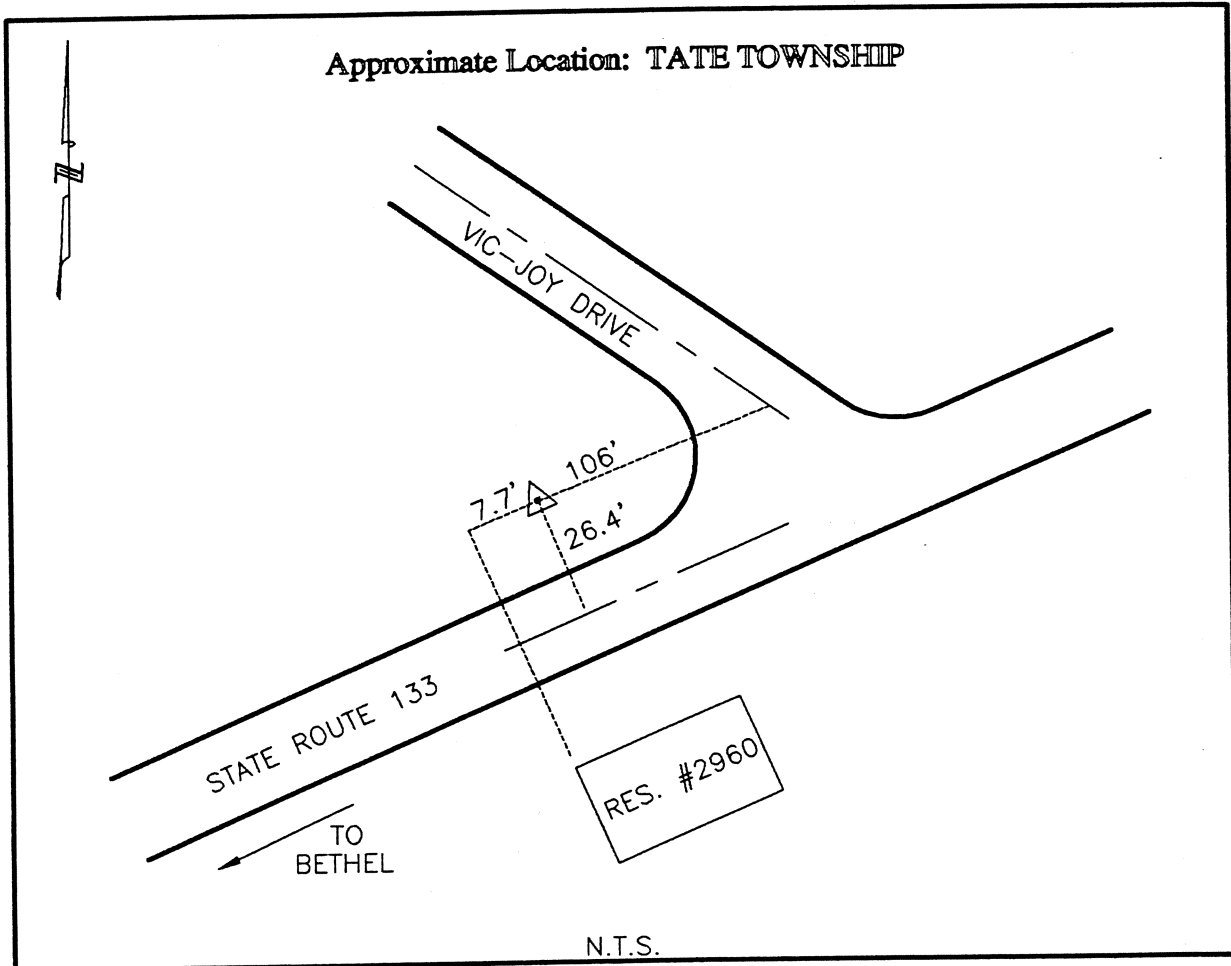




CLERMONT COUNTY ENGINEER  
CONTROL STATION DATA SHEET



Station Name: 163

NAD 1983 (First Order)

State Plane Zone: Ohio South 3402  
 Latitude (dms) N 38 58 40.19263  
 Longitude (dms) W 84 04 13.83105  
 Easting in meters 463922.220  
 Northing in meters 109735.783  
 Easting in US survey ft 1522051.483  
 Northing in US survey ft 360024.815  
 Scale .99996100  
 Convergence (dms) 0-59 47.466259

NAVD 1988

Elevation in meters 272.930  
 Elevation in feet 895.438  
 Geoid Ht. in meters -33.994  
 Elevations determined with GPS

Azimuth: N 65° 06' 05" E to Station 163A.