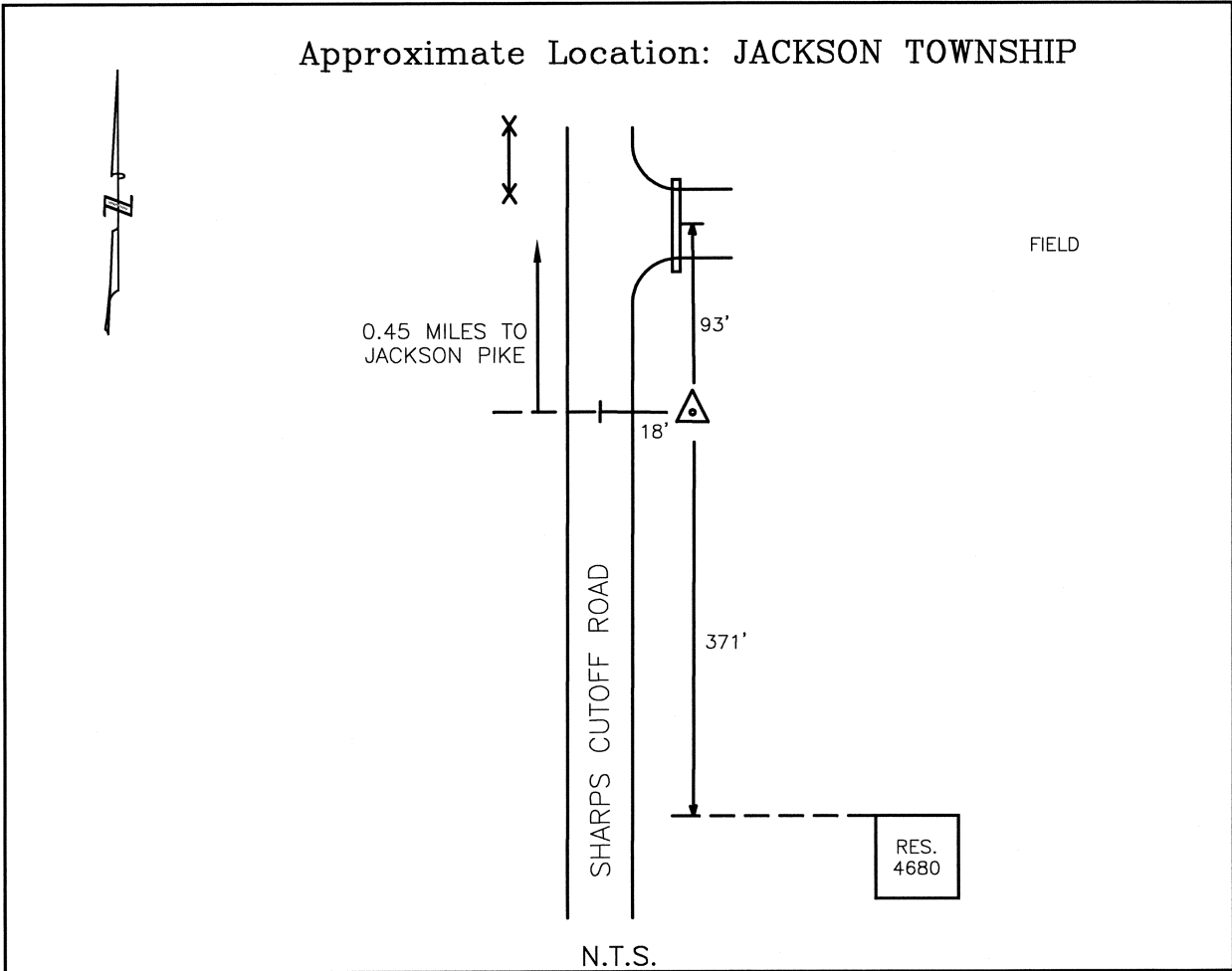




CLERMONT COUNTY ENGINEER

CONTROL STATION DATA SHEET

Approximate Location: JACKSON TOWNSHIP



Station Name: 167RESET

NAD 1983
 State Plane Zone: Ohio South 3402
 Latitude (dms) N 39 05 55.92003
 Longitude (dms) W 84 04 34.97265
 Easting in meters 463647.984
 Northing in meters 123178.878
 Easting in US survey ft 1521151.759
 Northing in US survey ft 404129.368
 Scale 0.99994825
 Convergence -1 0 0.881018

NAVD 1988
 Elevation in meters 278.916
 Elevation in feet 915.077
 Geoid96 Ht in meters -33.720
 Elevations determined with GPS

Azimuth: N.01°46'52"E. to Station 167A