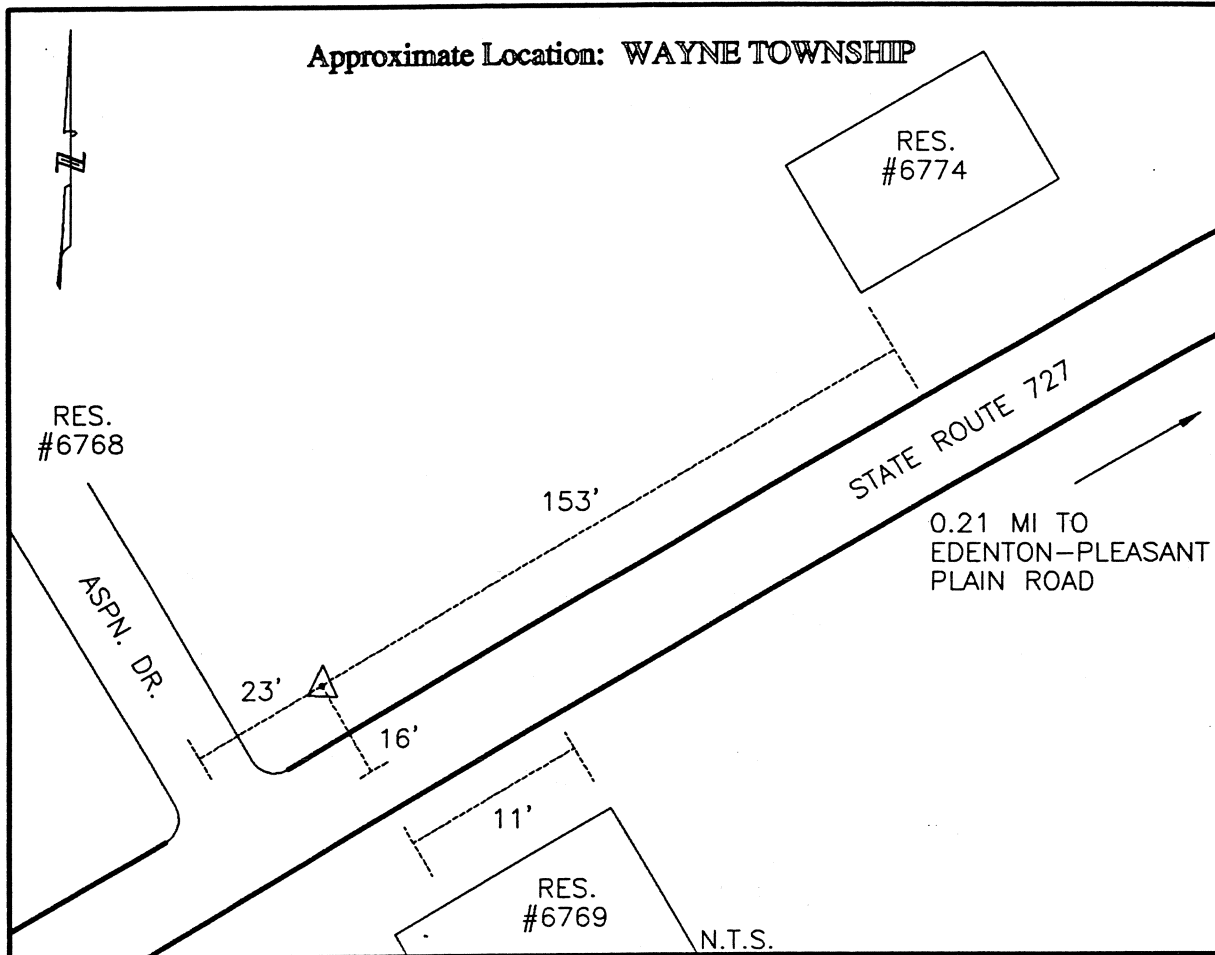




CLERMONT COUNTY ENGINEER
CONTROL STATION DATA SHEET



Station Name: 170

NAD 1983 (First Order)

State Plane Zone: Ohio South 3402
 Latitude (dms) N 39 13 31.94281
 Longitude (dms) W 84 03 29.87456
 Easting in meters 465454.598
 Northing in meters 137211.897
 Easting in US survey ft 1527078.960
 Northing in US survey ft 450169.365
 Scale .99993970
 Convergence (dms) 0-59 19.575007

NAVD 1988

Elevation in meters 276.045
 Elevation in feet 905.658
 Geoid Ht. in meters -33.777
 Elevations determined with GPS

Azimuth: N 53° 34' 01" E to Station 170A.