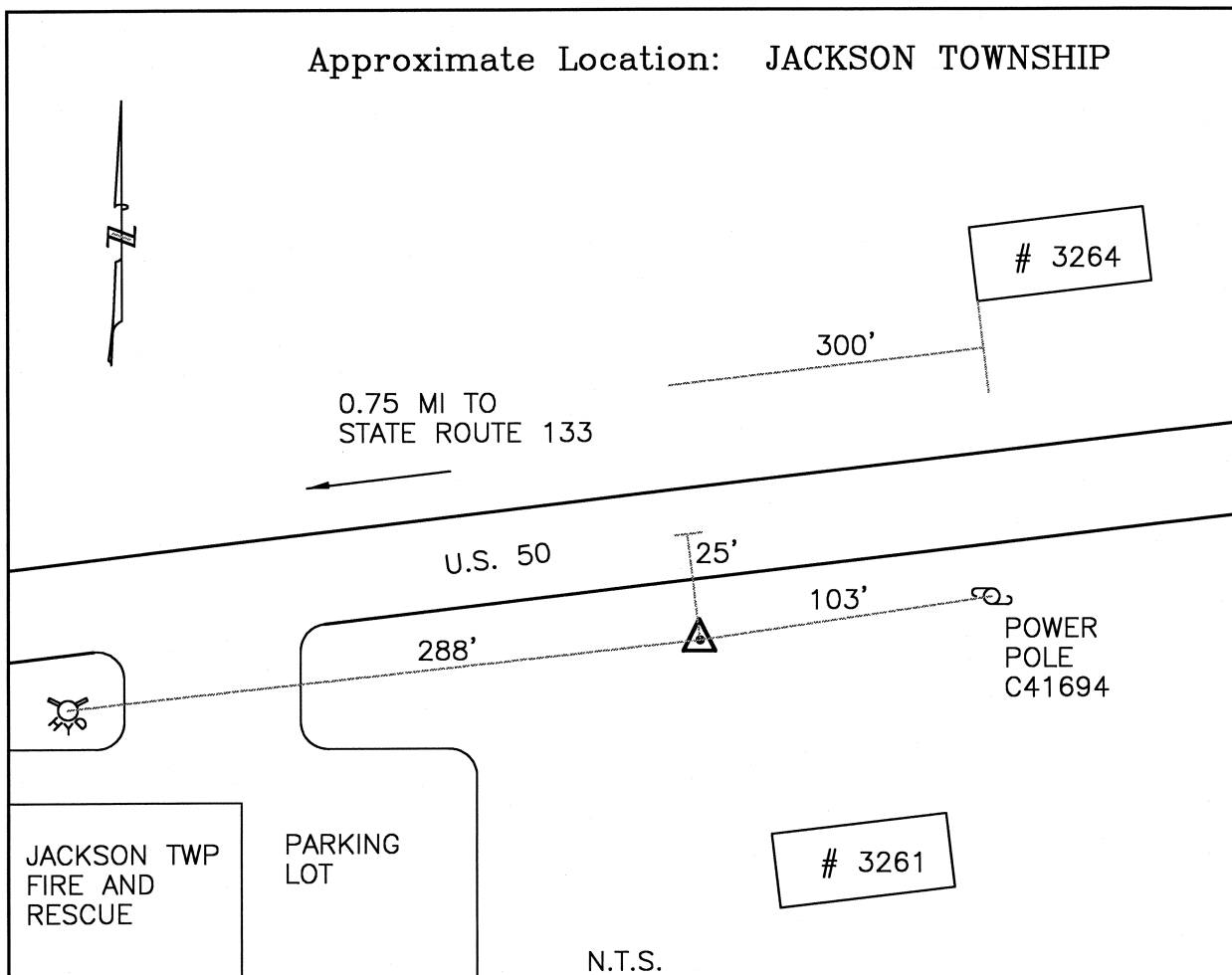




CLERMONT COUNTY ENGINEER

CONTROL STATION DATA SHEET

Approximate Location: JACKSON TOWNSHIP



Station Name: 172

NAD 1983 (First Order)

State Plane Zone: Ohio South 3402

Latitude (dms) N 39 08 11.38715

Longitude (dms) W 84 03 20.28170

Easting in meters 465514.360

Northing in meters 127324.482

Easting in US survey ft 1527275.029

Northing in US survey ft 417730.405

Scale .99994520

Convergence (dms) 0-59 13.488150

NAVD 1988

Elevation in meters 278.146

Elevation in feet 912.551

Geoid Ht. in meters -33.876

Elevations determined with GPS

Azimuth: S 87° 44' 51" W to Station 172A.