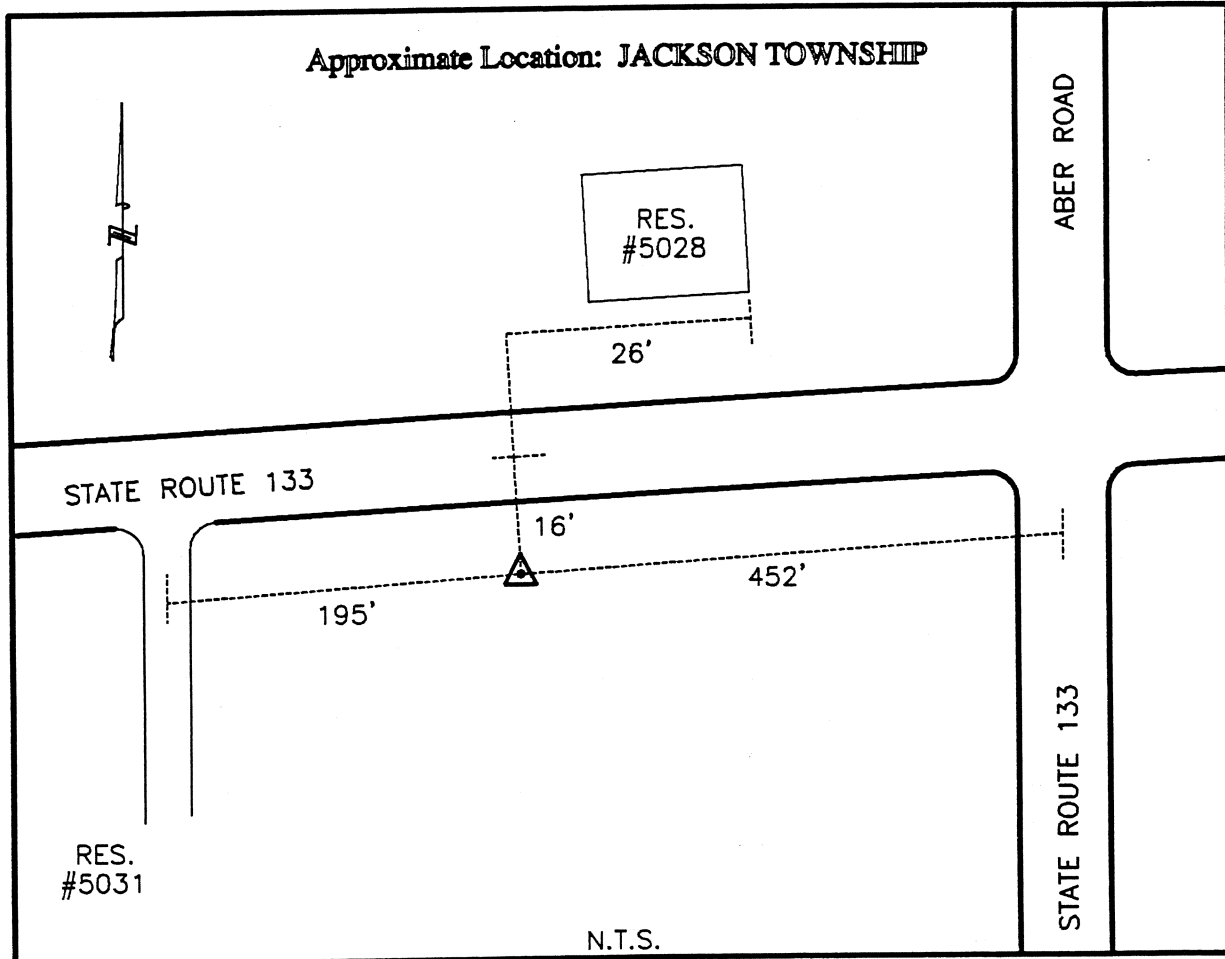




CLERMONT COUNTY ENGINEER
CONTROL STATION DATA SHEET



Station Name : 173

NAD 1983 (First Order)
 State Plane Zone: Ohio South 3402
 Latitude (dms) N 39 07 13.526 93
 Longitude (dms) W 84 03 20.862 13
 Easting in meters 46546 9.6 83
 Northing in meters 12554 0.7 72
 Easting in US survey ft 152712 8.4 52
 Northing in US survey ft 41187 8.3 49
 Scale .999 946 50
 Convergence (dms) 0-5 9 13.8 564 44

NAVD 1988
 Elevation in meters 275.103
 Elevation in feet 902.567
 Geoid Ht. in meters -33.885
 Elevations determined with GPS

Azimuth: N 87° 11' 39" W to Station 173A.