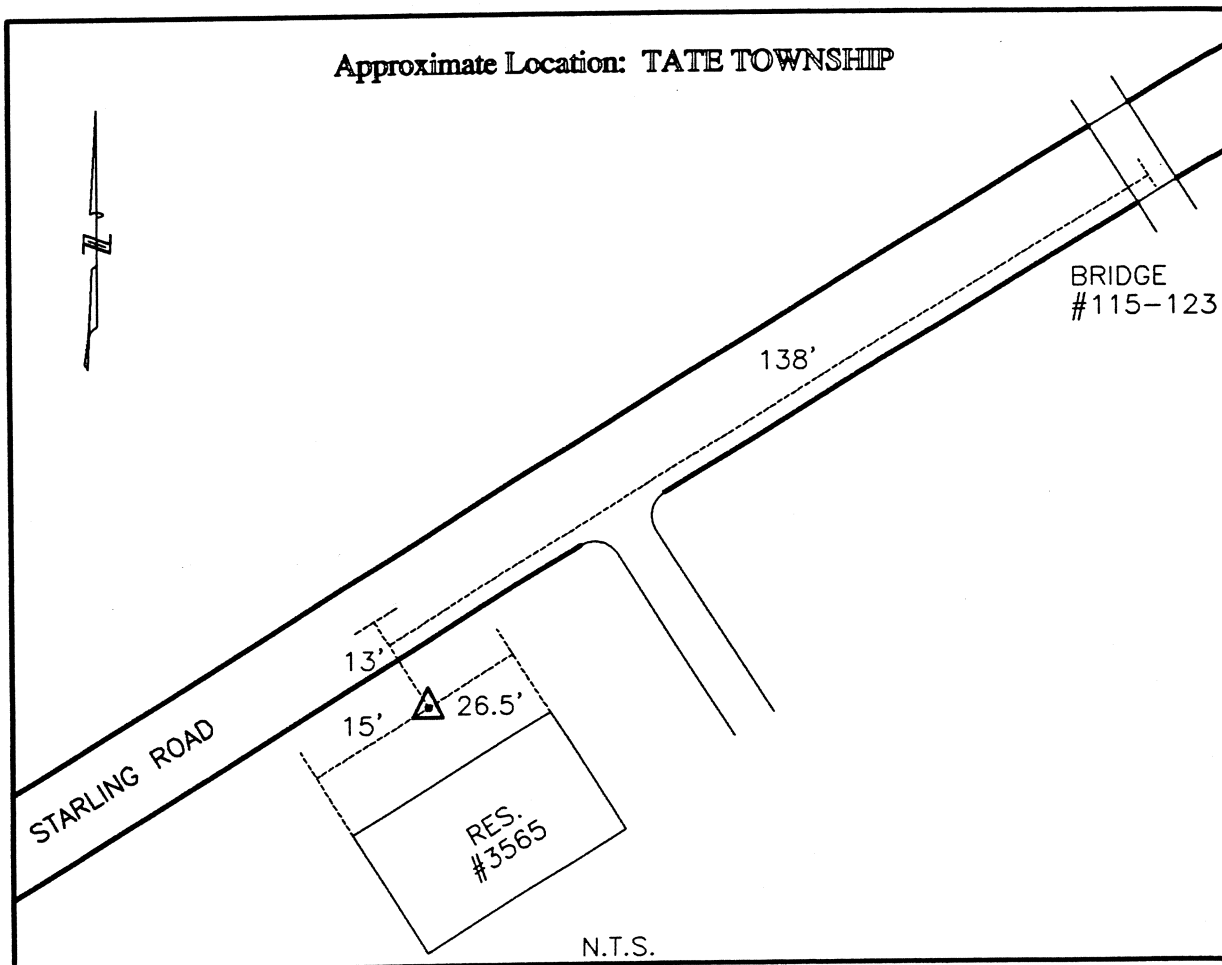




CLERMONT COUNTY ENGINEER
CONTROL STATION DATA SHEET

Approximate Location: TATE TOWNSHIP



Station Name: 180

NAD 1983 (First Order)

State Plane Zone: Ohio South 3402
 Latitude (dms) N 38 58 17.25356
 Longitude (dms) W 84 03 6.67139
 Easting in meters 465526.319
 Northing in meters 109000.585
 Easting in US survey ft 1527314.265
 Northing in US survey ft 357612.753
 Scale .99996170
 Convergence (dms) 0-59 4.852143

NAVD 1988

Elevation in meters 270.383
 Elevation in feet 887.082
 Geoid Ht. in meters -33.967
 Elevations determined with GPS

Azimuth: N 61° 31' 07" E to Station 180A.