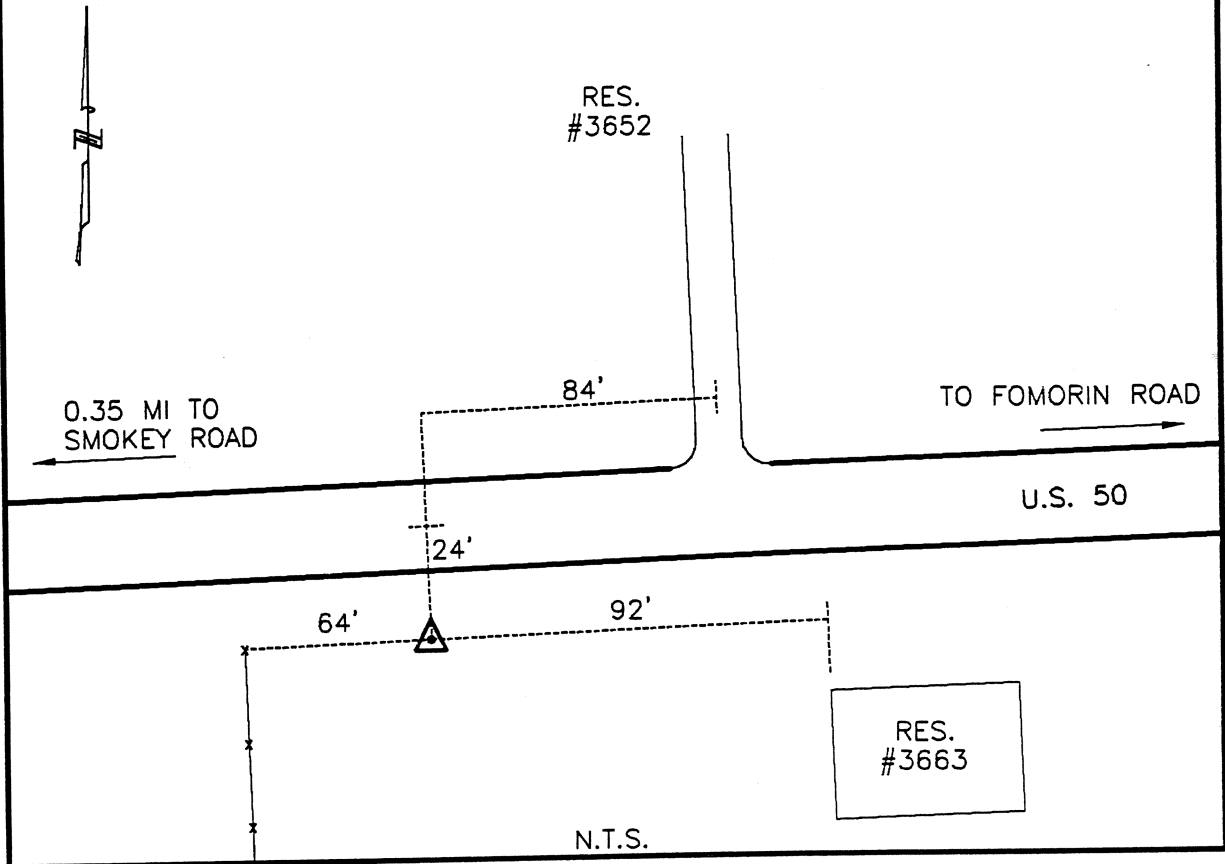




CLERMONT COUNTY ENGINEER  
CONTROL STATION DATA SHEET

Approximate Location: JACKSON TOWNSHIP



Station Name: 197

NAD 1983 (First Order)  
 State Plane Zone: Ohio South 3402  
 Latitude (dms) N 39 08 25.94772  
 Longitude (dms) W 84 01 11.67277  
 Easting in meters 468610.048  
 Northing in meters 127720.822  
 Easting in US survey ft 1537431.466  
 Northing in US survey ft 419030.730  
 Scale .99994490  
 Convergence (dms) 0-57 51.883271

NAVD 1988  
 Elevation in meters 274.430  
 Elevation in feet 900.359  
 Geoid Ht. in meters -33.804  
 Elevations determined with GPS

Azimuth: N 70° 38' 43" E to Station 197A.