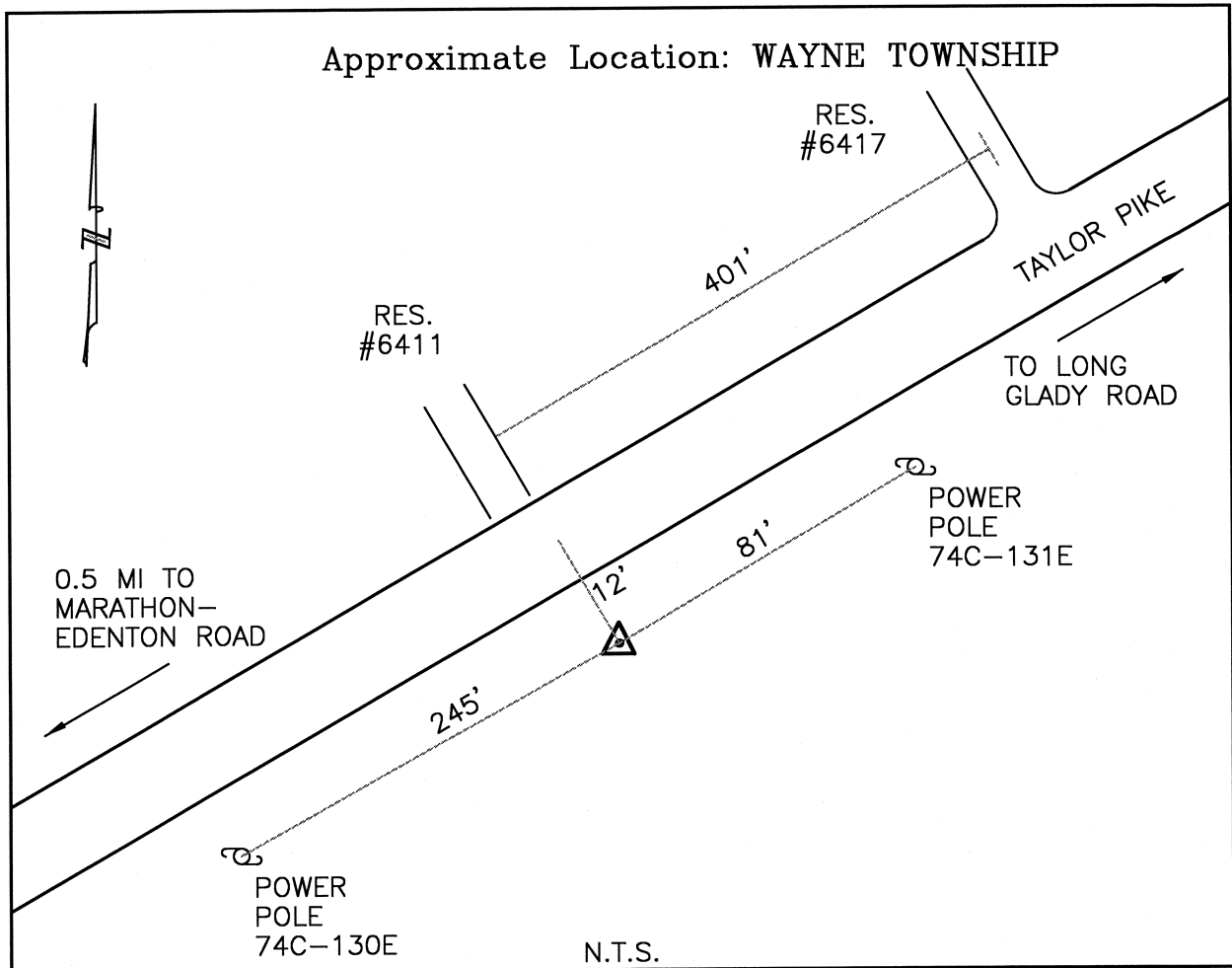




# CLERMONT COUNTY ENGINEER CONTROL STATION DATA SHEET



Station Name: 199

NAD 1983 (First Order)

State Plane Zone: Ohio South 3402  
 Latitude (dms) N 39 12 33.26210  
 Longitude (dms) W 84 01 17.66286  
 Easting in meters 468594.726  
 Northing in meters 135348.544  
 Easting in US survey ft 1537381.197  
 Northing in US survey ft 444056.015  
 Scale .99994060  
 Convergence (dms) 0-57 55.684101

NAVD 1988

Elevation in meters 286.905  
 Elevation in feet 941.287  
 Geoid Ht. in meters -33.728  
 Elevations determined with GPS

Azimuth: N.51°30'17"E. to Station 199ARESET