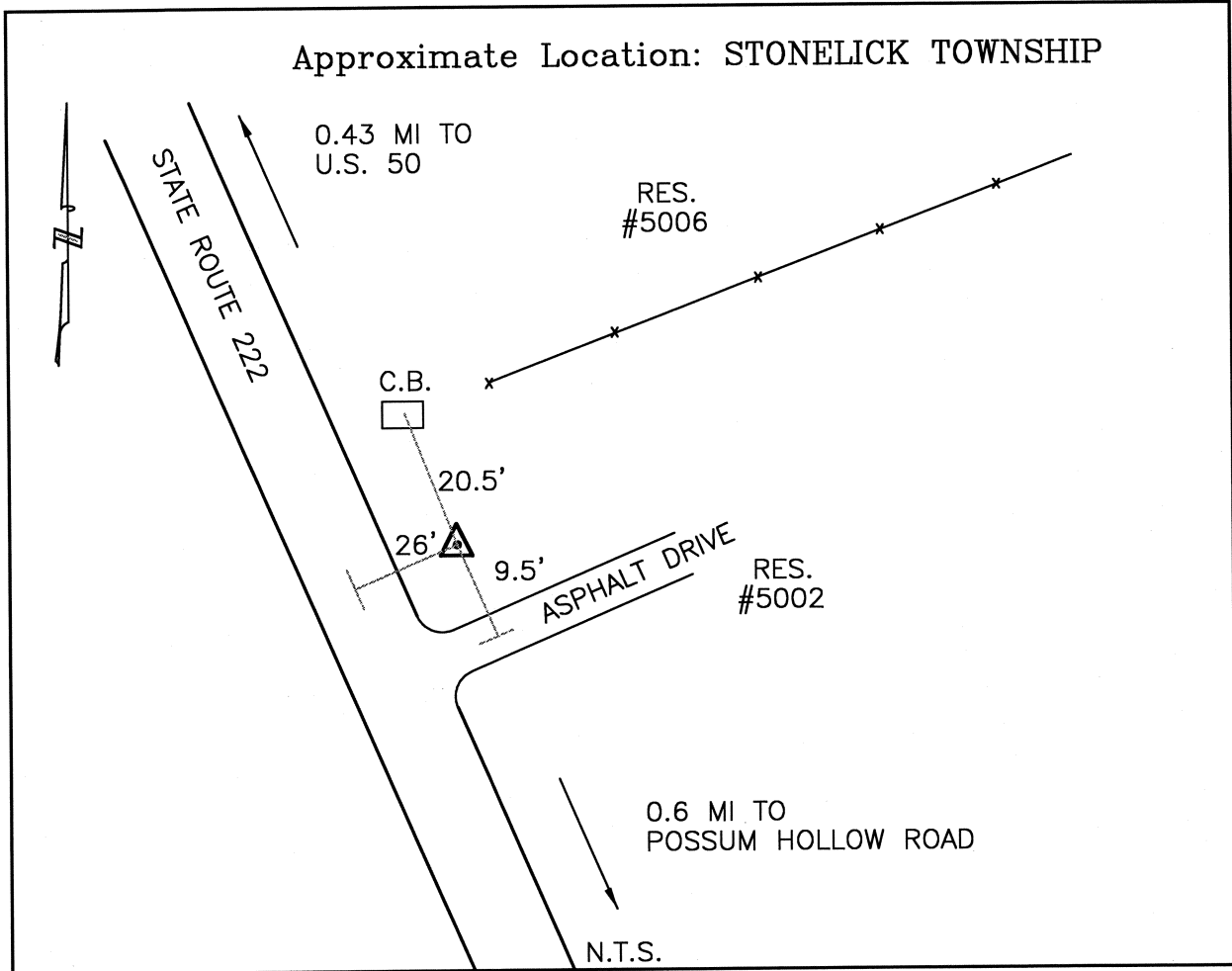




CLERMONT COUNTY ENGINEER CONTROL STATION DATA SHEET

Approximate Location: STONELICK TOWNSHIP



Station Name: 205

NAD 1983 (First Order)

State Plane Zone: Ohio South 3402
 Latitude (dms) N 39 06 56.79721
 Longitude (dms) W 84 11 44.12280
 Easting in meters 453373.252
 Northing in meters 125242.604
 Easting in US survey ft 1487442.078
 Northing in US survey ft 410900.110
 Scale .99994680
 Convergence (dms) -1 4 33.185172

NAVD 1988

Elevation in meters 169.700
 Elevation in feet 556.757
 Geoid Ht. in meters -34.122
 Elevations determined with GPS

Azimuth: N 14° 00' 21" W to Station ST43A