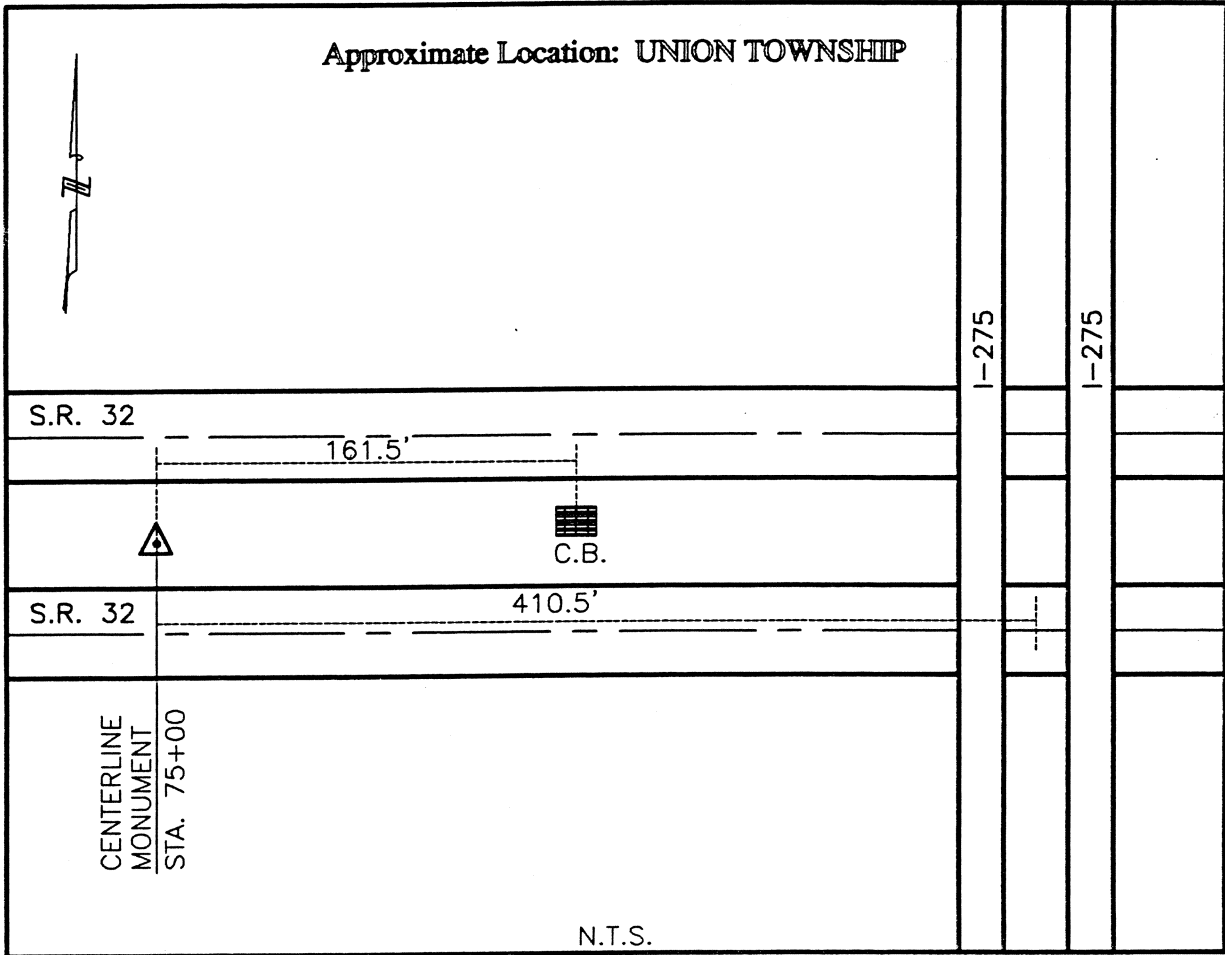




CLERMONT COUNTY ENGINEER  
CONTROL STATION DATA SHEET



Station Name: 219

NAD 1983 (First Order)

State Plane Zone: Ohio South 3402  
 Latitude (dms) N 39 06 7.27527  
 Longitude (dms) W 84 17 7.12913  
 Easting in meters 445585.133  
 Northing in meters 123865.364  
 Easting in US survey ft 1461890.557  
 Northing in US survey ft 406381.615  
 Scale .99994800  
 Convergence (dms) -1 7 58.138998

NAVD 1988

Elevation in meters 264.157  
 Elevation in feet 866.655  
 Geoid Ht. in meters -34.199  
 Elevations determined with GPS

Azimuth: N 67° 12' 47" W to Station 219A.