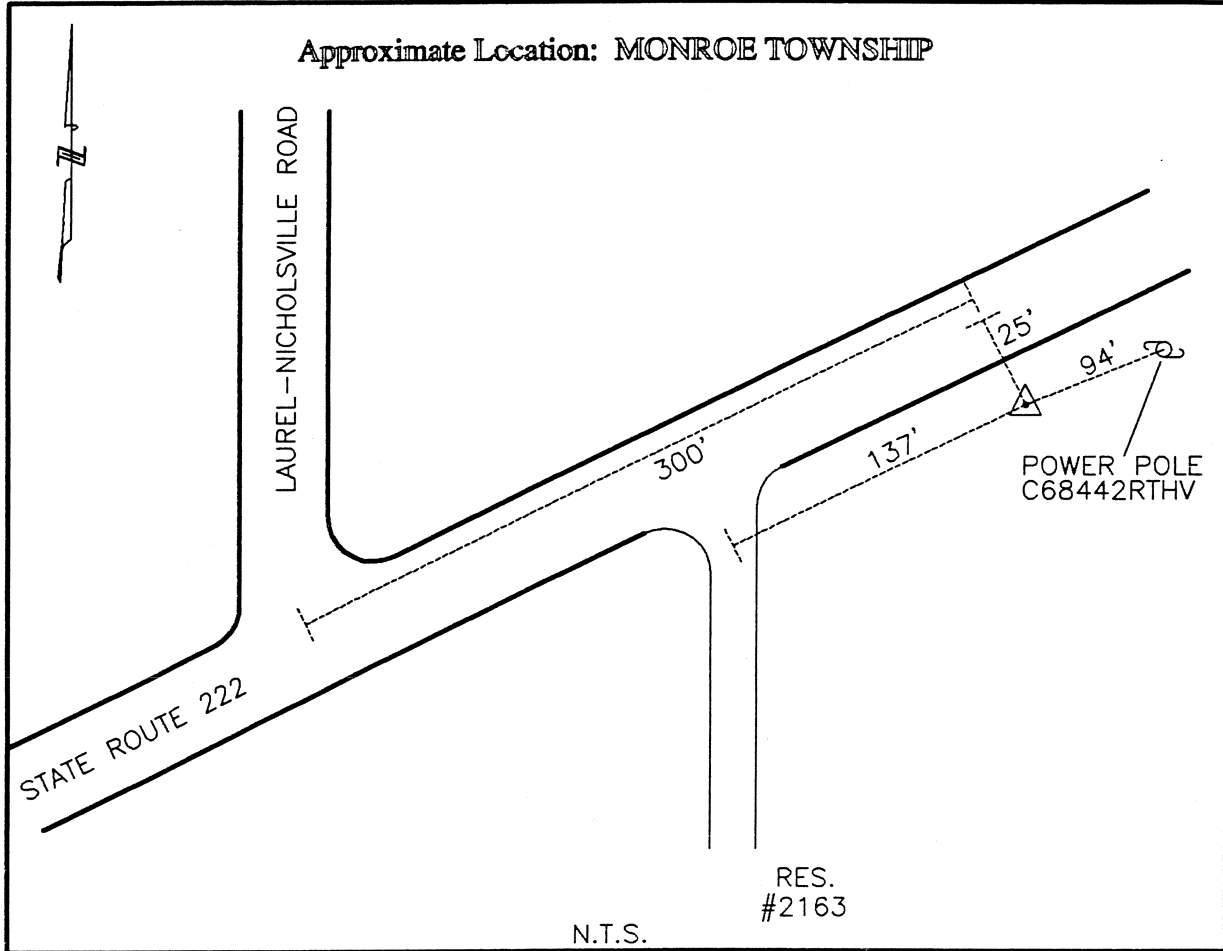




CLERMONT COUNTY ENGINEER
CONTROL STATION DATA SHEET



Station Name: 246

NAD 1983 (First Order)

State Plane Zone:	Ohio South 3402
Latitude (dms)	N 38 55 57.99559
Longitude (dms)	W 84 10 26.63194
Easting in meters	454857.834
Northing in meters	104896.291
Easting in US survey ft	1492312.742
Northing in US survey ft	344147.248
Scale	0.99996677
Convergence	-1 3 44.015706

NAVD 1988

Elevation in meters	271.954
Elevation in feet	892.236
Geoid Ht in meters	-34.159
Elevations determined with GPS	

Azimuth: S 59° 34' 31" W to Station 246A.