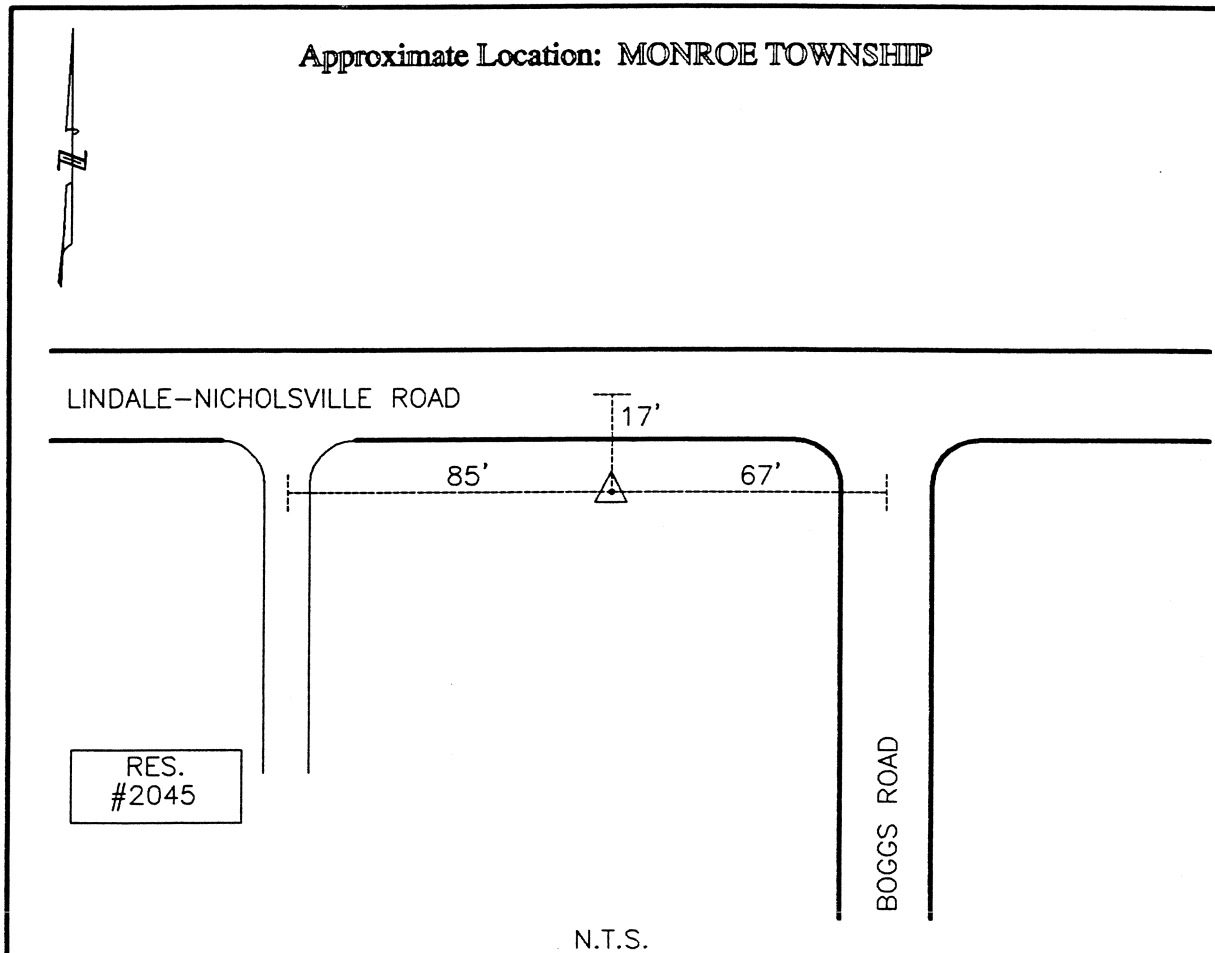




CLERMONT COUNTY ENGINEER
CONTROL STATION DATA SHEET

Approximate Location: MONROE TOWNSHIP



Station Name: 251

NAD 1983 (First Order)
 State Plane Zone: Ohio South 3402
 Latitude (dms) N 38 58 22.12826
 Longitude (dms) W 84 11 1.80590
 Easting in meters 454093.696
 Northing in meters 109355.784
 Easting in US survey ft 1489805.733
 Northing in US survey ft 358778.101
 Scale 0.99996155
 Convergence -1 4 6.334275

NAVD 1988
 Elevation in meters 268.864
 Elevation in feet 882.098
 Geoid Ht in meters -34.154
 Elevations determined with GPS

Azimuth: S 84° 24' 17" E to Station 251A.