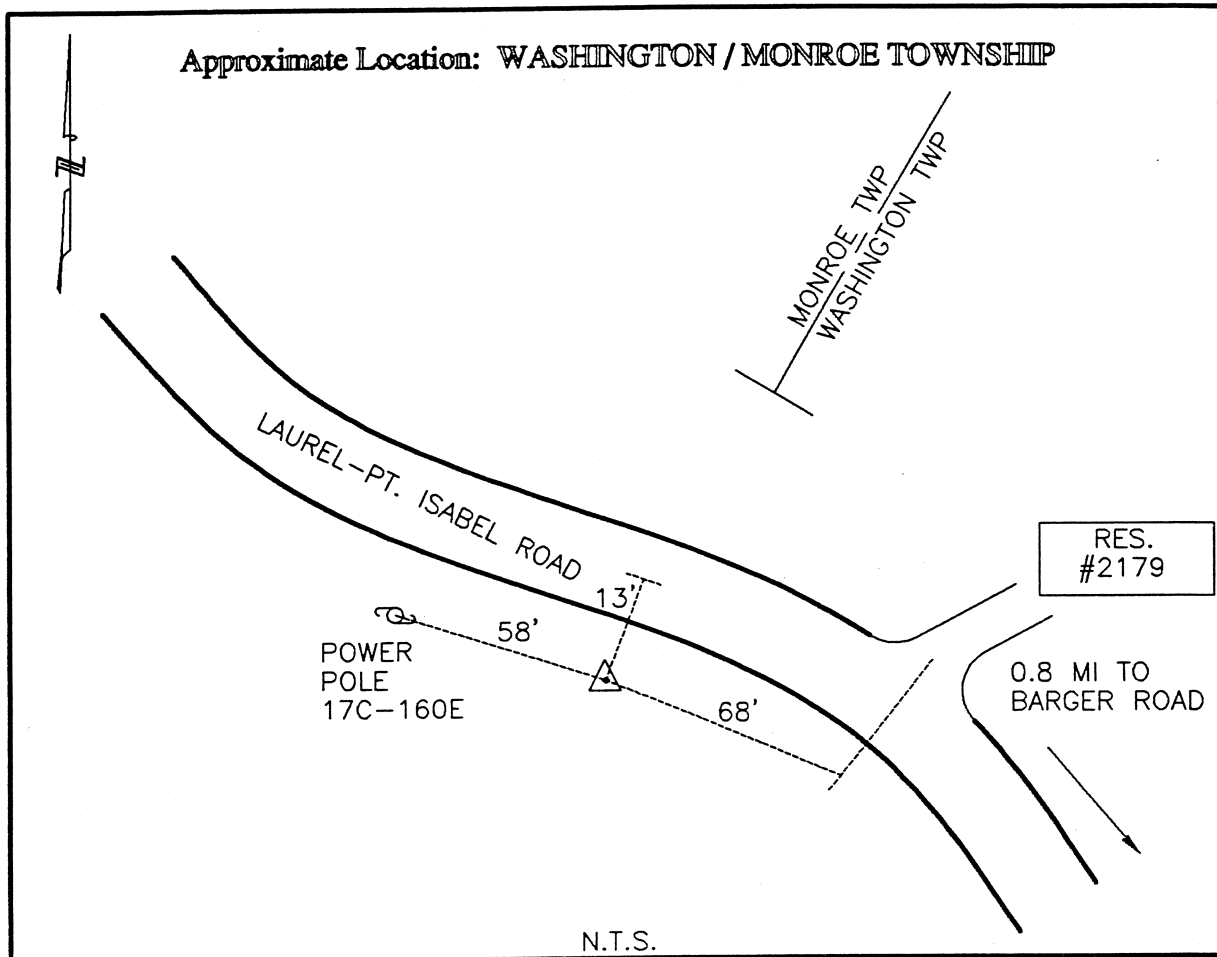




CLERMONT COUNTY ENGINEER

CONTROL STATION DATA SHEET



Station Name: 254

NAD 1983 (First Order)
 State Plane Zone: Ohio South 3402
 Latitude (dms) N 38 54 14.45655
 Longitude (dms) W 84 11 3.56199
 Easting in meters 453908.982
 Northing in meters 101720.631
 Easting in US survey ft 1489199.717
 Northing in US survey ft 333728.437
 Scale 0.99997083
 Convergence -1 4 7.448544

NAVD 1988
 Elevation in meters 232.128
 Elevation in feet 761.573
 Geoid Ht in meters -34.185
 Elevations determined with GPS

Azimuth: N 26° 05' 32" W to Station 254A.