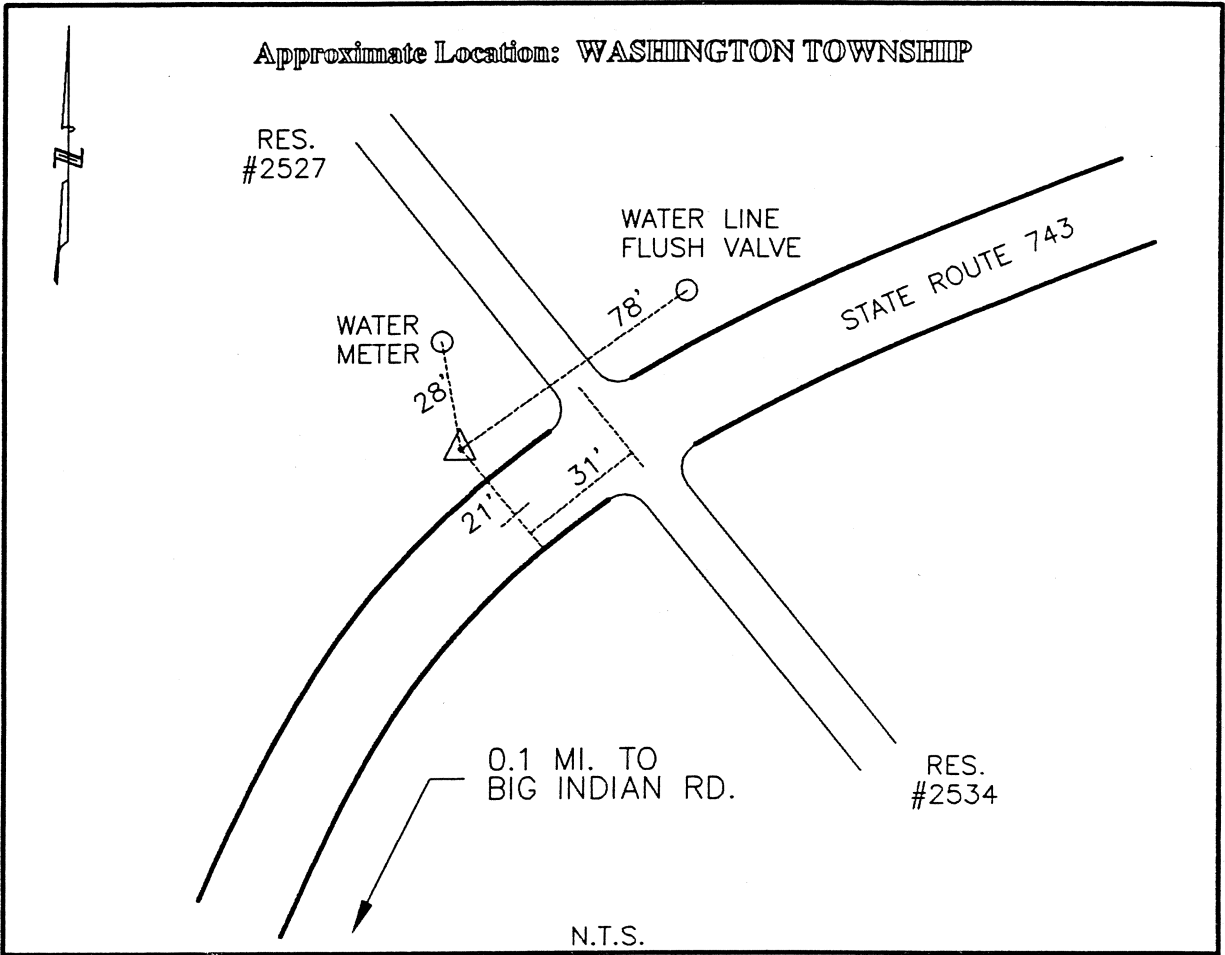




CLERMONT COUNTY ENGINEER CONTROL STATION DATA SHEET



Station Name: 256

NAD 1983 (First Order)
 State Plane Zone: Ohio South 3402
 Latitude (dms) N 38 52 51.79227
 Longitude (dms) W 84 09 32.01022
 Easting in meters 456067.687
 Northing in meters 99131.174
 Easting in US survey ft 1496282.068
 Northing in US survey ft 325232.860
 Scale 0.99997424
 Convergence -1 3 9.357161

NAVD 1988
 Elevation in meters 201.536
 Elevation in feet 661.206
 Geoid Ht in meters -34.165
 Elevations determined with GPS

Azimuth: S 63° 33' 11" W to Station 256A.