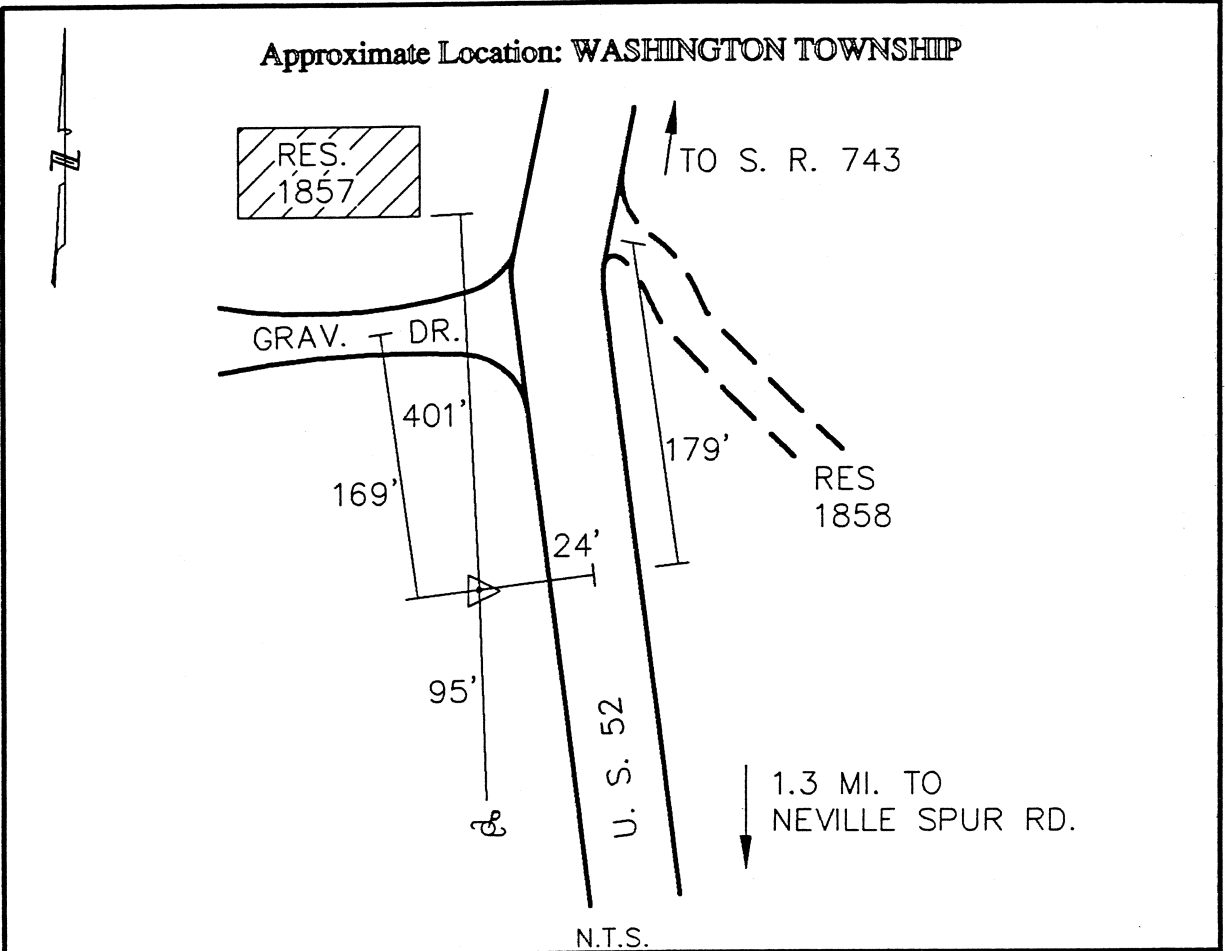




CLERMONT COUNTY ENGINEER

CONTROL STATION DATA SHEET

Approximate Location: WASHINGTON TOWNSHIP



Station Name: 267

NAD 1983 (First Order)	
State Plane Zone:	Ohio South 3402
Latitude (dms)	N 38 50 17.97040
Longitude (dms)	W 84 13 20.61462
Easting in meters	450468.243
Northing in meters	94491.911
Easting in US survey ft	1477911.226
Northing in US survey ft	310012.211
Scale	0.99998102
Convergence	-1 5 34.411113

NAVD 1988	
Elevation in meters	158.268
Elevation in feet	519.251
Geoid Ht in meters	-34.235
Elevations determined with GPS	

Azimuth: S 13° 42' 32" E to Station 267A.