

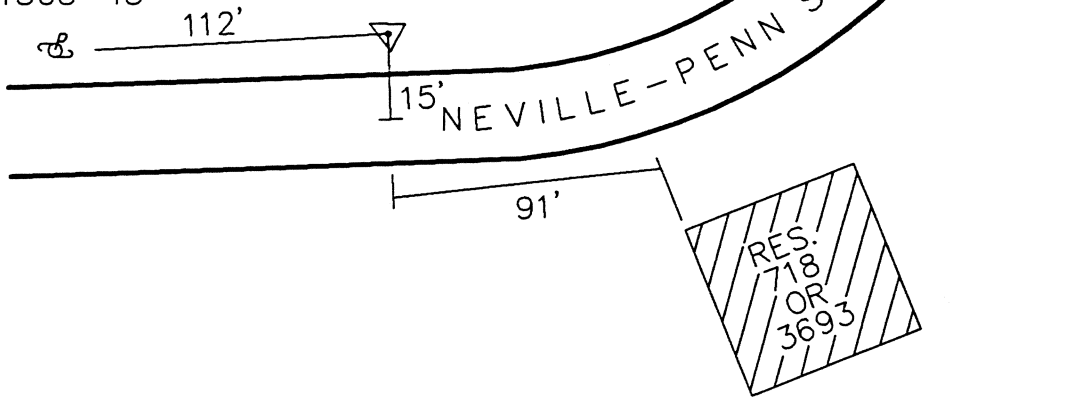


CLERMONT COUNTY ENGINEER CONTROL STATION DATA SHEET

Approximate Location: WASHINGTON TOWNSHIP

0.35 MI. TO CHILO
CEMETERY McKENDREE
CHAPEL RD.

POWER POLE
1305-45



N.T.S.

Azimuth: N 88° 08' 00" W to Station 270.