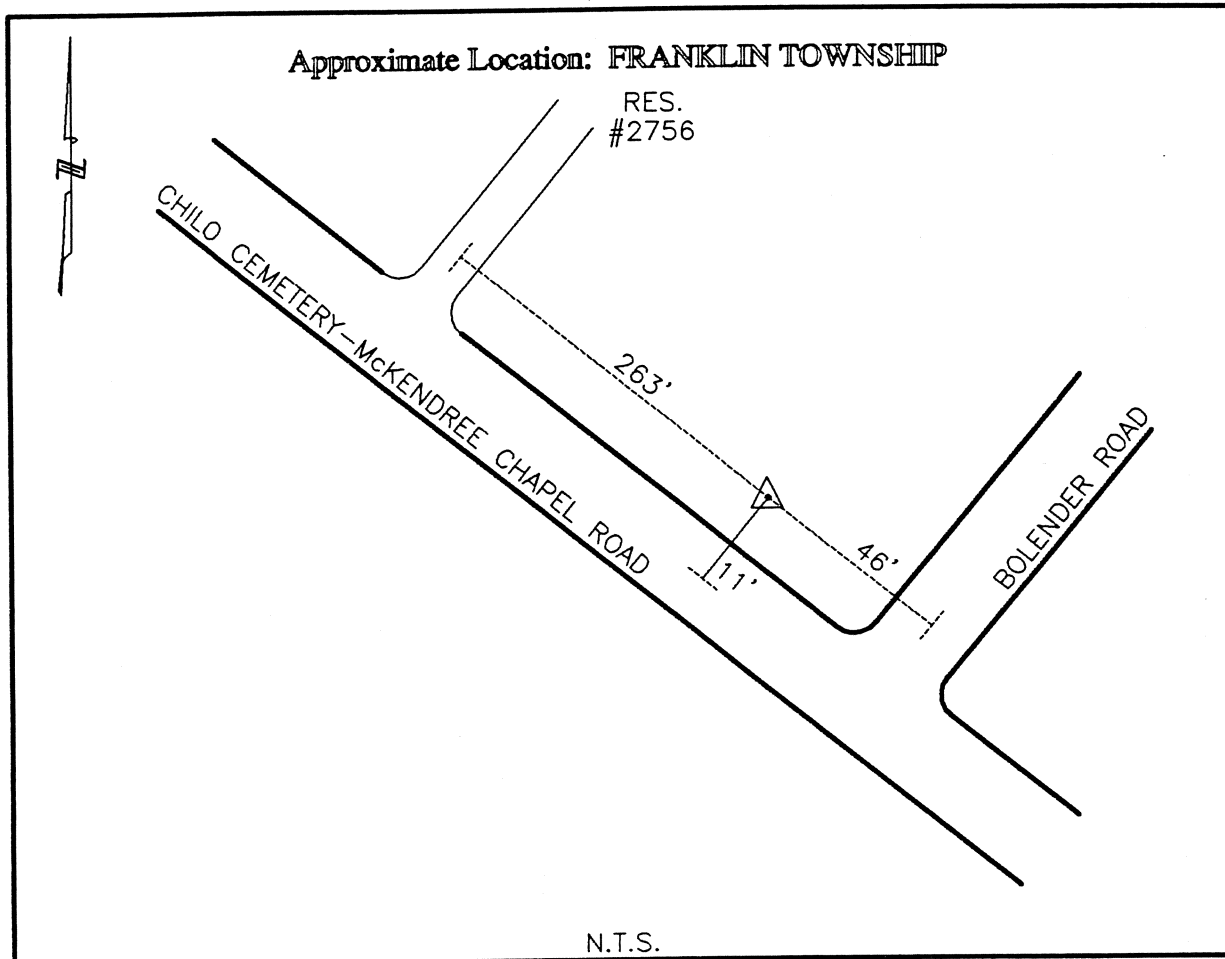




CLERMONT COUNTY ENGINEER
CONTROL STATION DATA SHEET



Station Name: 275

NAD 1983 (First Order)
 State Plane Zone: Ohio South 3402
 Latitude (dms) N 38 49 38.46942
 Longitude (dms) W 84 08 35.67376
 Easting in meters 457316.831
 Northing in meters 93145.993
 Easting in US survey ft 1500380.302
 Northing in US survey ft 305596.478
 Scale 0.99998285
 Convergence -1 2 33.610572

NAVD 1988
 Elevation in meters 258.039
 Elevation in feet 846.583
 Geoid Ht in meters -34.165
 Elevations determined with GPS

Azimuth: N 65° 13' 37" W to Station 275A.