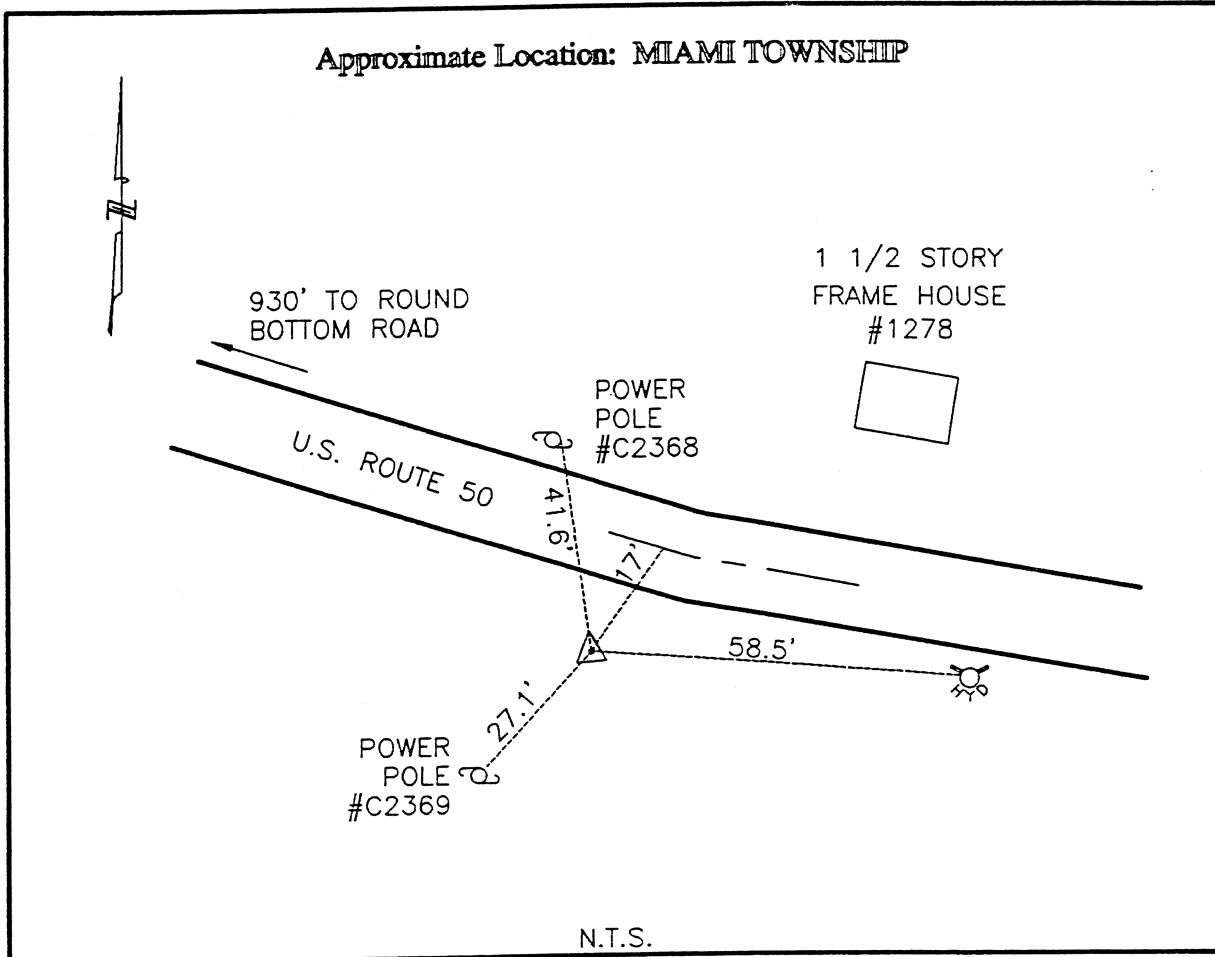




CLERMONT COUNTY ENGINEER

CONTROL STATION DATA SHEET

Approximate Location: MIAMI TOWNSHIP



Station Name: 29

NAD 1983 (First Order)
 State Plane Zone: Ohio South 3402
 Latitude (dms) N 39 08 9.50074
 Longitude (dms) W 84 14 6.59325
 Easting in meters 449994.473
 Northing in meters 127549.135
 Easting in US survey ft 1476356.865
 Northing in US survey ft 418467.453
 Scale 0.99994526
 Convergence -1 6 3.585453

NAVD 1988
 Elevation in meters 163.160
 Elevation in feet 535.301
 Geoid Ht in meters -34.149
 Elevations determined with GPS

Azimuth: N 34° 45' 23" W to Station 29A.