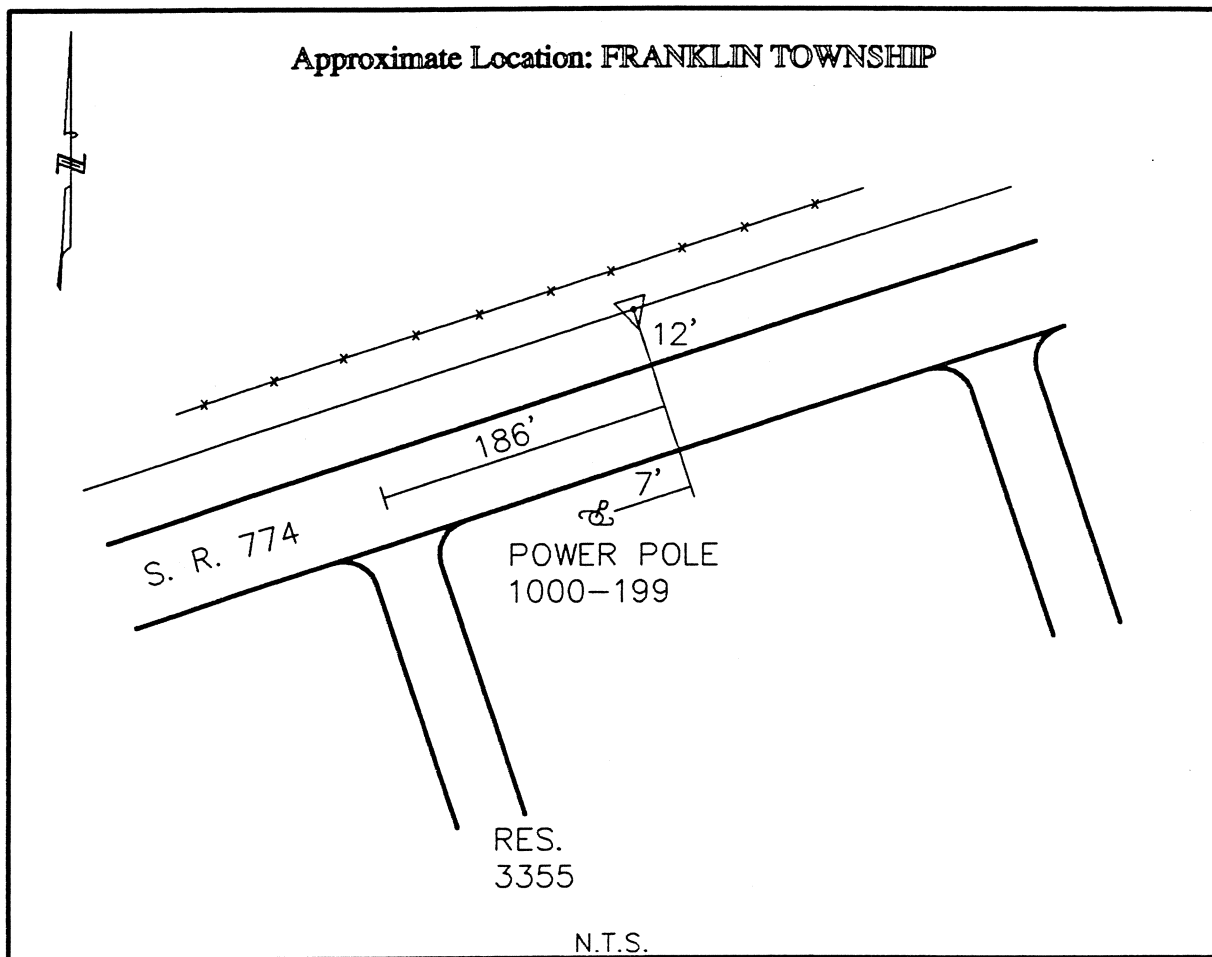




CLERMONT COUNTY ENGINEER
CONTROL STATION DATA SHEET



Station Name: 297

NAD 1983 (First Order)
 State Plane Zone: Ohio South 3402
 Latitude (dms) N 38 52 26.22226
 Longitude (dms) W 84 04 50.83707
 Easting in meters 462829.771
 Northing in meters 98221.248
 Easting in US survey ft 1518467.339
 Northing in US survey ft 322247.544
 Scale 0.99997533
 Convergence -1 0 10.947302

NAVD 1988
 Elevation in meters 269.633
 Elevation in feet 884.621
 Geoid Ht in meters -34.068
 Elevations determined with GPS

Azimuth: S 55° 45' 50" W to Station 297A.