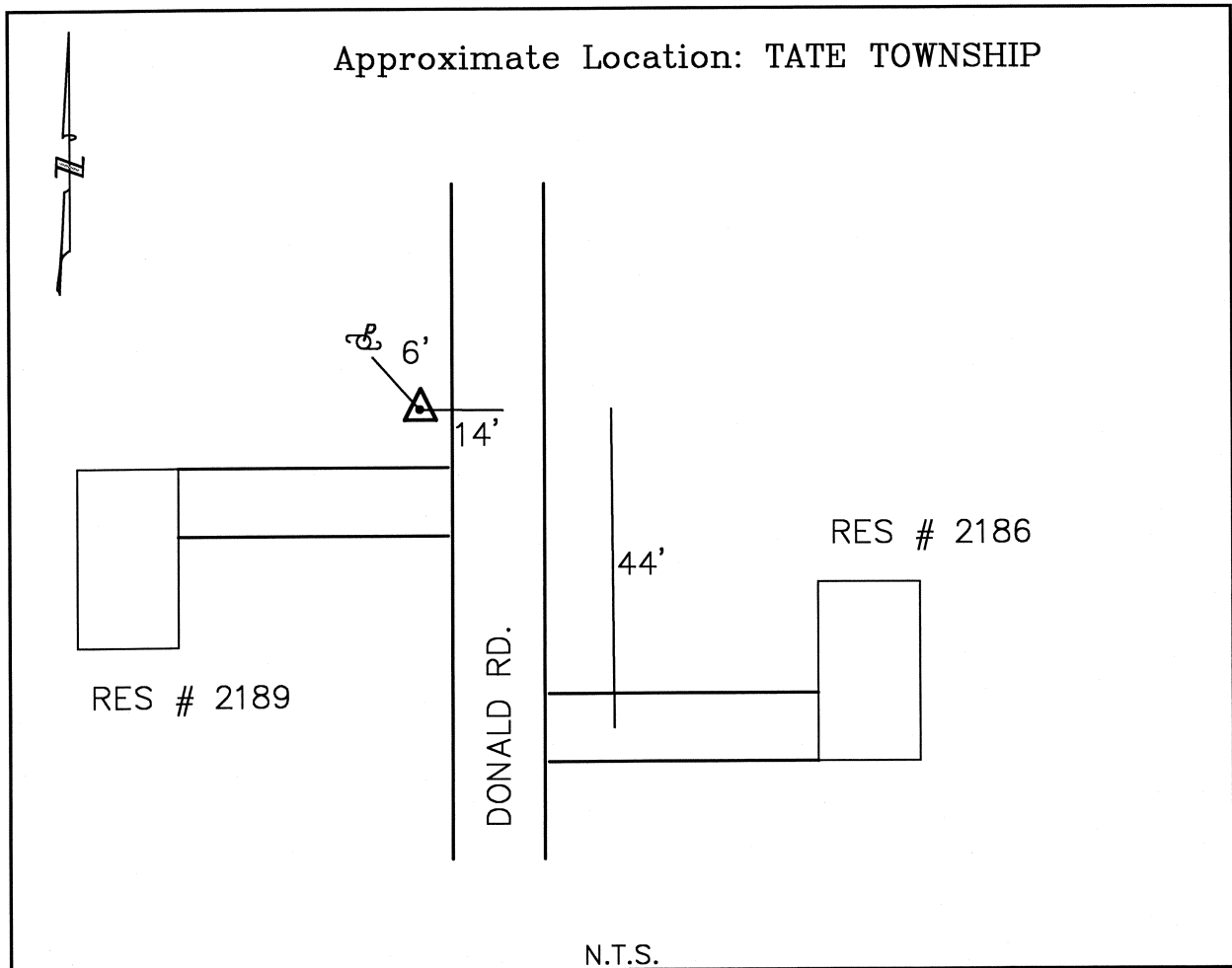




CLERMONT COUNTY ENGINEER

CONTROL STATION DATA SHEET



Station Name: 307

NAD 1983 (First Order)		NAVD 1988	
State Plane Zone:	Ohio South 3402	Elevation in meters	283.573
Latitude (dms)	N 38 55 30.30612	Elevation in feet	930.356
Longitude (dms)	W 84 04 33.08542	Geoid Ht in meters	-34.033
Easting in meters	463356.667	Elevations determined with GPS	
Northing in meters	103889.356		
Easting in US survey ft	1520195.997		
Northing in US survey ft	340843.662		
Scale	0.99996783		
Convergence	0-59 59.683532		

Azimuth: S 02° 36' 34" W to Station 307A.