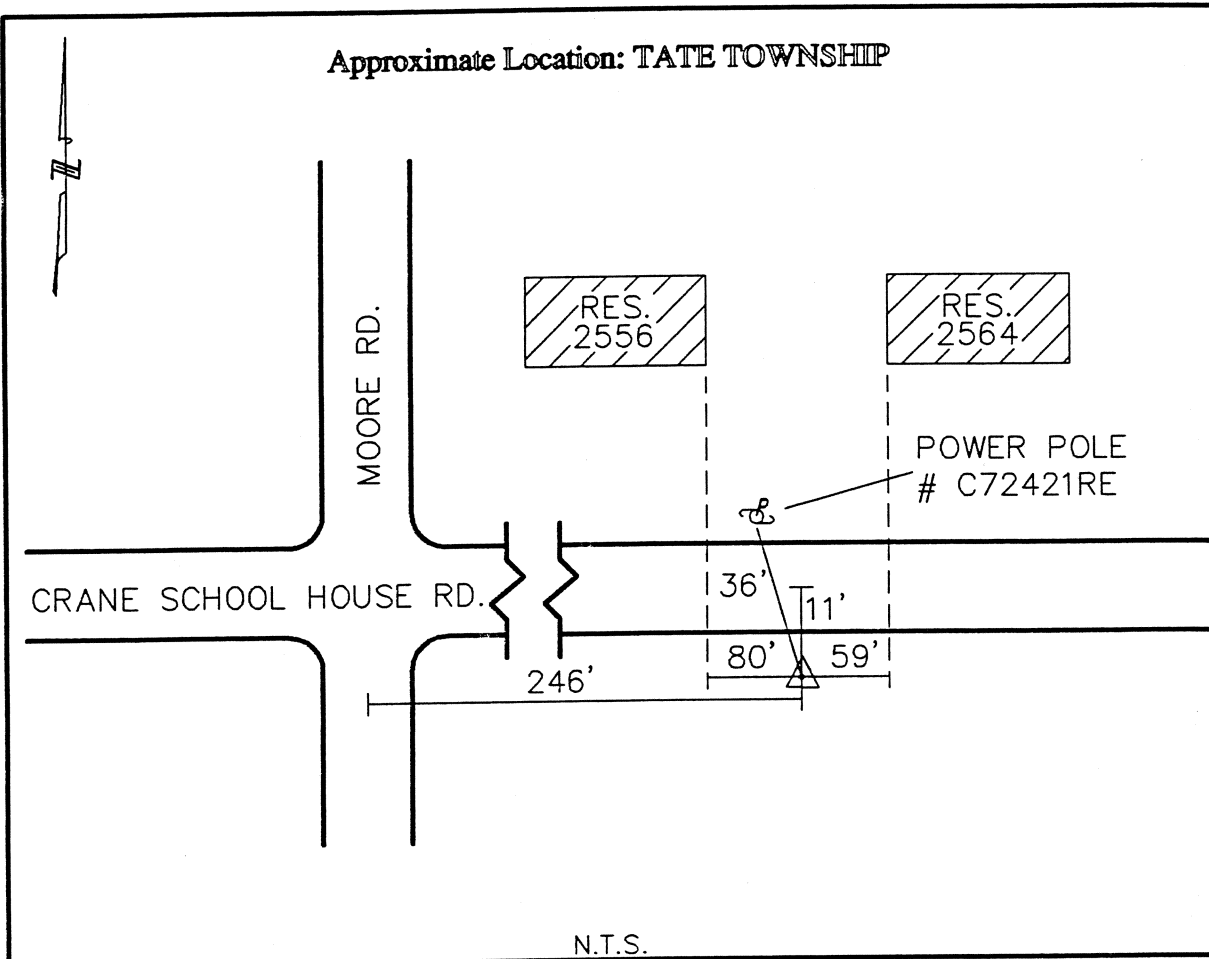




CLERMONT COUNTY ENGINEER
CONTROL STATION DATA SHEET

Approximate Location: TATE TOWNSHIP



Station Name: 316

NAD 1983 (First Order)	
State Plane Zone:	Ohio South 3402
Latitude (dms)	N 38 58 5.34383
Longitude (dms)	W 84 08 24.32309
Easting in meters	457874.449
Northing in meters	108768.532
Easting in US survey ft	1502209.753
Northing in US survey ft	356851.425
Scale	0.99996213
Convergence	-1 2 26.408352

NAVD 1988	
Elevation in meters	272.277
Elevation in feet	893.295
Geoid Ht in meters	-34.103
Elevations determined with GPS	

Azimuth: S 87° 15' 41" E to Station 316A.