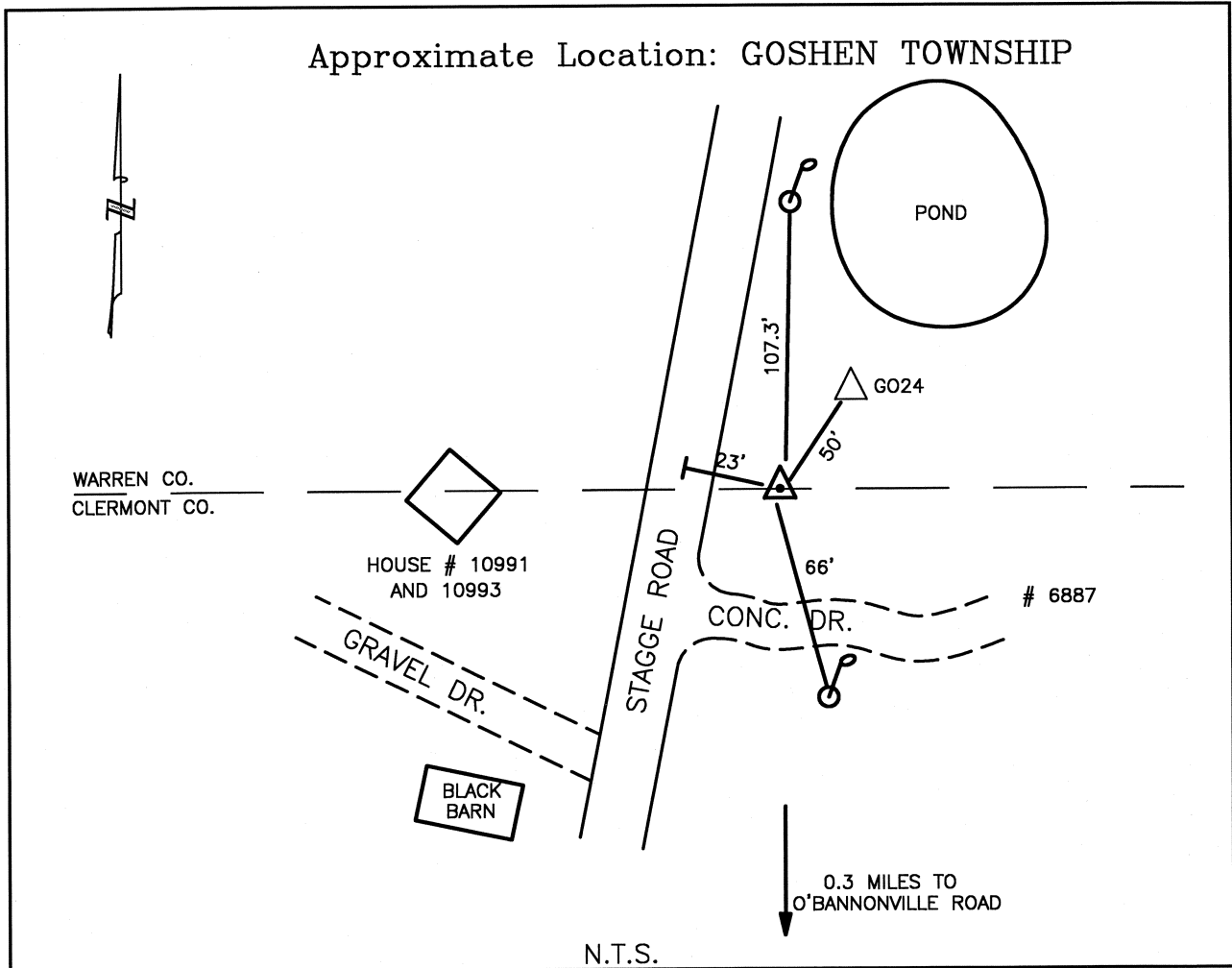




CLERMONT COUNTY ENGINEER CONTROL STATION DATA SHEET

Approximate Location: GOSHEN TOWNSHIP



Station Name: 333

NAD 1983
 State Plane Zone: Ohio South 3402
 Latitude (dms) N 39 16 05.73952
 Longitude (dms) W 84 13 08.10125
 Easting in meters 451678.470
 Northing in meters 142205.333
 Easting in US survey ft 1481881.780
 Northing in US survey ft 466551.996
 Scale 0.99993795
 Convergence -1 05 26

NAVD 1988
 Elevation in meters 225.482
 Elevation in feet 739.770
 Geoid Ht in meters -33.788
 Elevations determined with GPS

Azimuth: N.21°05'06"E. to Station 333A