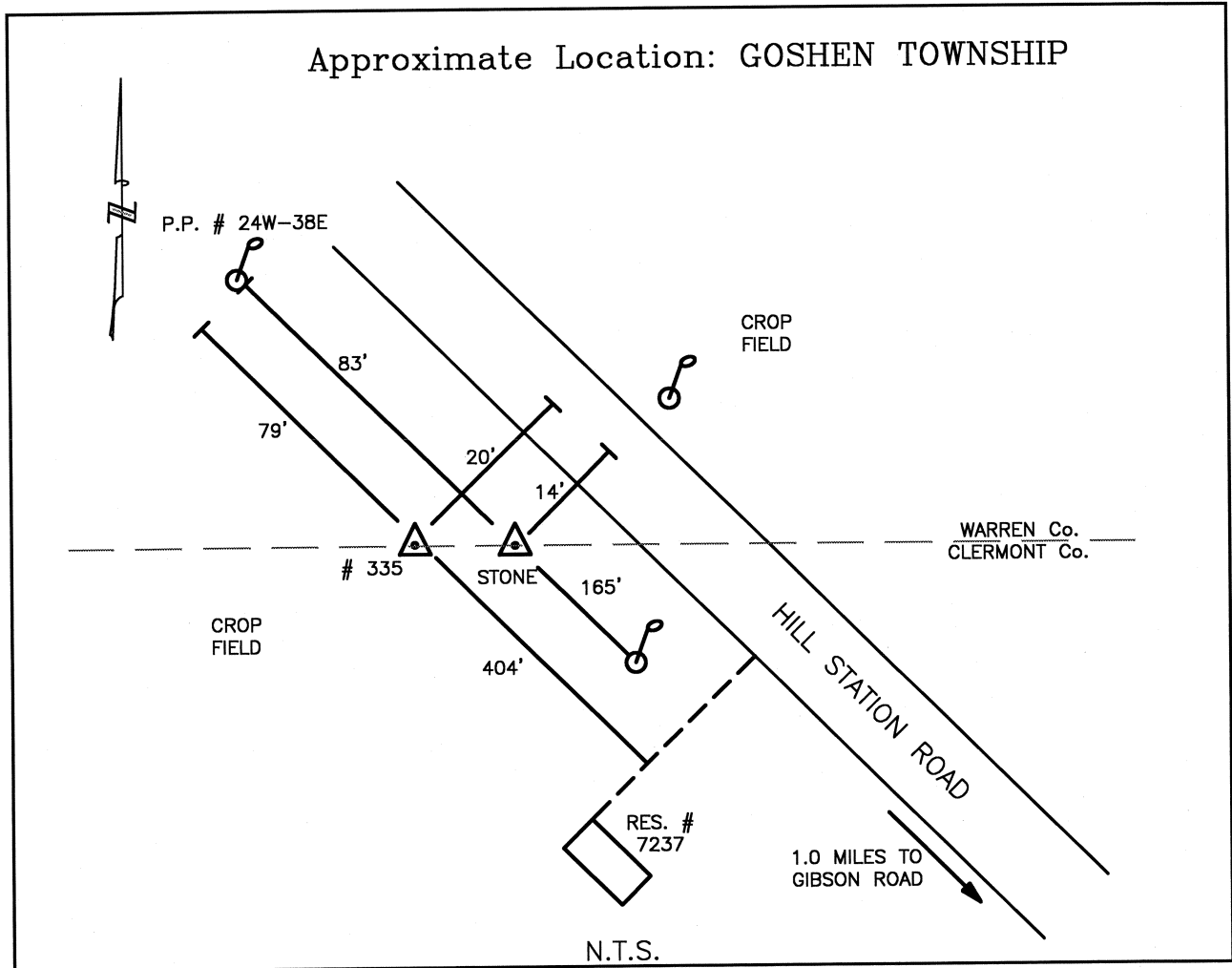




CLERMONT COUNTY ENGINEER CONTROL STATION DATA SHEET

Approximate Location: GOSHEN TOWNSHIP



Station Name: 335

NAD 1983
 State Plane Zone: Ohio South 3402
 Latitude (dms) N 39 15 59.87607
 Longitude (dms) W 84 11 36.05207
 Easting in meters 453882.949
 Northing in meters 141982.681
 Easting in US survey ft 1489114.309
 Northing in US survey ft 465821.513
 Scale 0.99993801
 Convergence -1 04 28

NAVD 1988
 Elevation in meters 242.268
 Elevation in feet 794.840
 Geoid Ht in meters -33.760
 Elevations determined with GPS

Azimuth: S.41°01'53"E. to Station 335A