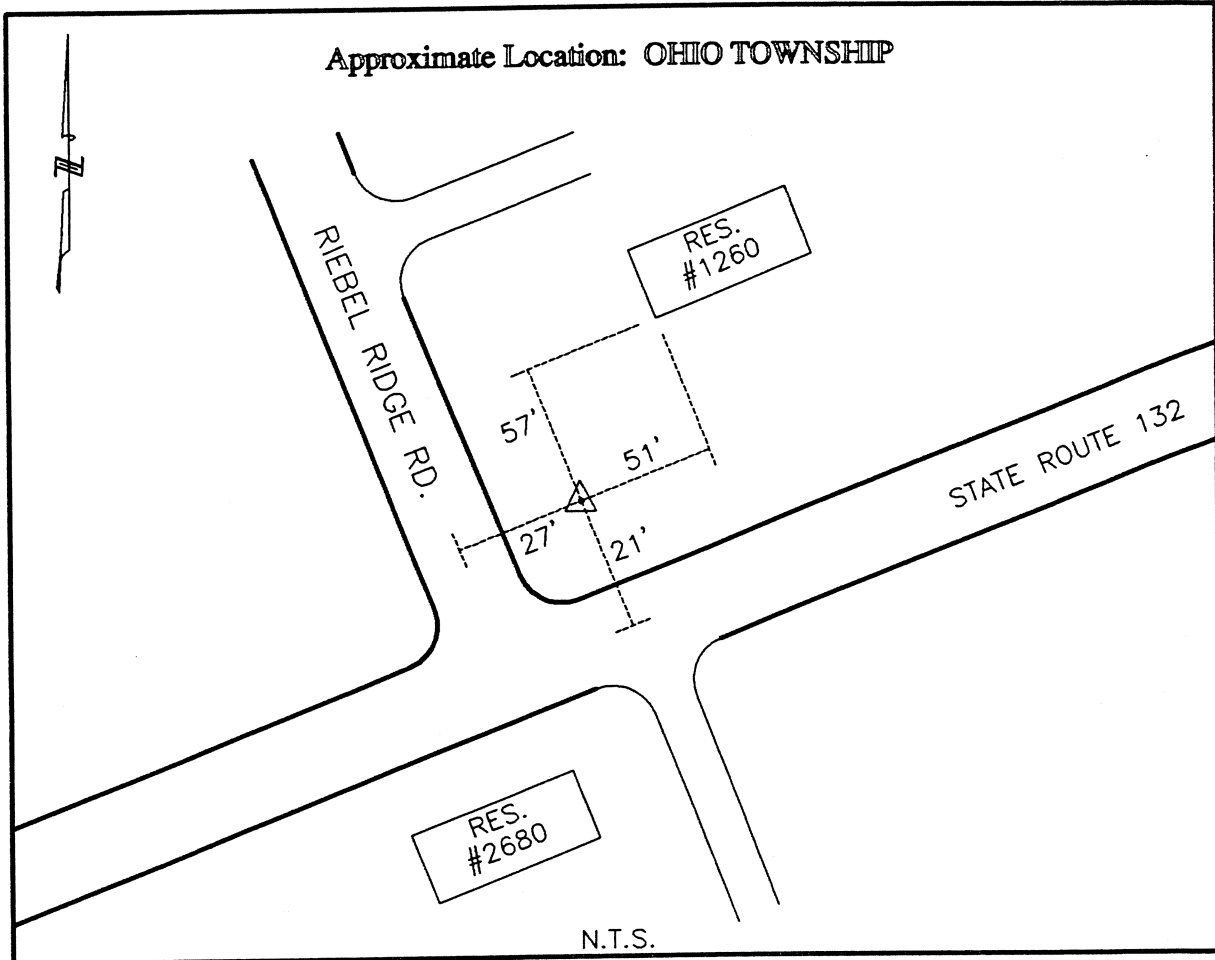




CLERMONT COUNTY ENGINEER  
CONTROL STATION DATA SHEET



Station Name: 35

NAD 1983 (First Order)	Ohio South 3402
State Plane Zone:	N 38 58 28.05594
Latitude (dms)	W 84 15 7.03297
Longitude (dms)	448195.408
Easting in meters	109650.832
Northing in meters	1470454.433
Easting in US survey ft	359746.104
Northing in US survey ft	0.99996134
Scale	-1 6 41.935638
Convergence	

NAVD 1988	
Elevation in meters	235.136
Elevation in feet	771.442
Geoid Ht in meters	-34.223
Elevations determined with GPS	

Azimuth: S 32° 43' 18" W to Station 35A.