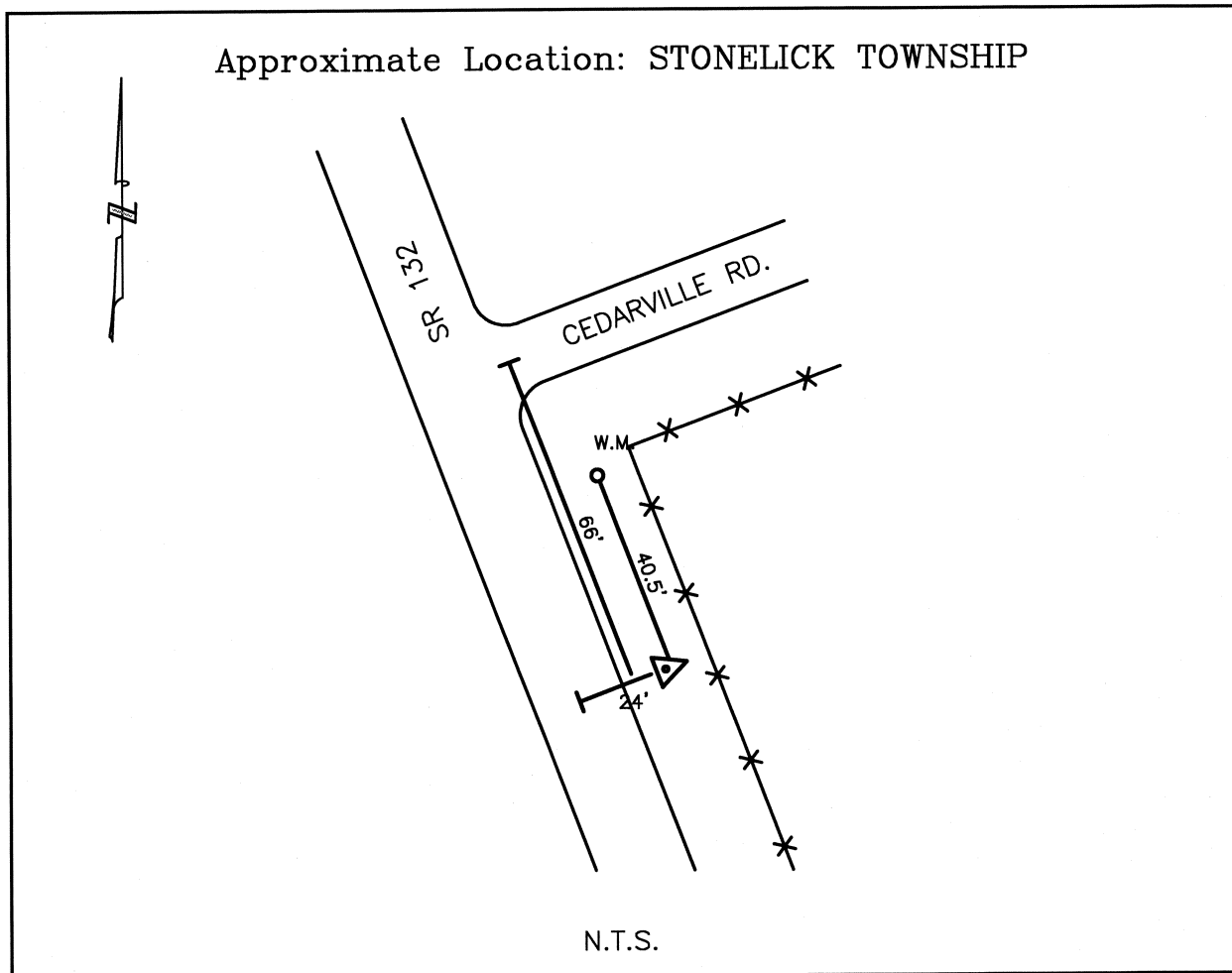




CLERMONT COUNTY ENGINEER

CONTROL STATION DATA SHEET

Approximate Location: STONELICK TOWNSHIP



Station Name: 362

NAD 1983
 State Plane Zone: Ohio South 3402
 Latitude (dms) N 39 10 46.56612
 Longitude (dms) W 84 09 47.14405
 Easting in meters 456313.360
 Northing in meters 132274.459
 Easting in US survey ft 1497088.081
 Northing in US survey ft 433970.456
 Scale 0.99994226
 Convergence -1 3 18.959866

NAVD 1988
 Elevation in meters 268.948
 Elevation in feet 882.375
 Geoid96 Ht in meters -33.799
 Elevations determined with GPS

Azimuth: N.32°25'55"W. to Station 362A