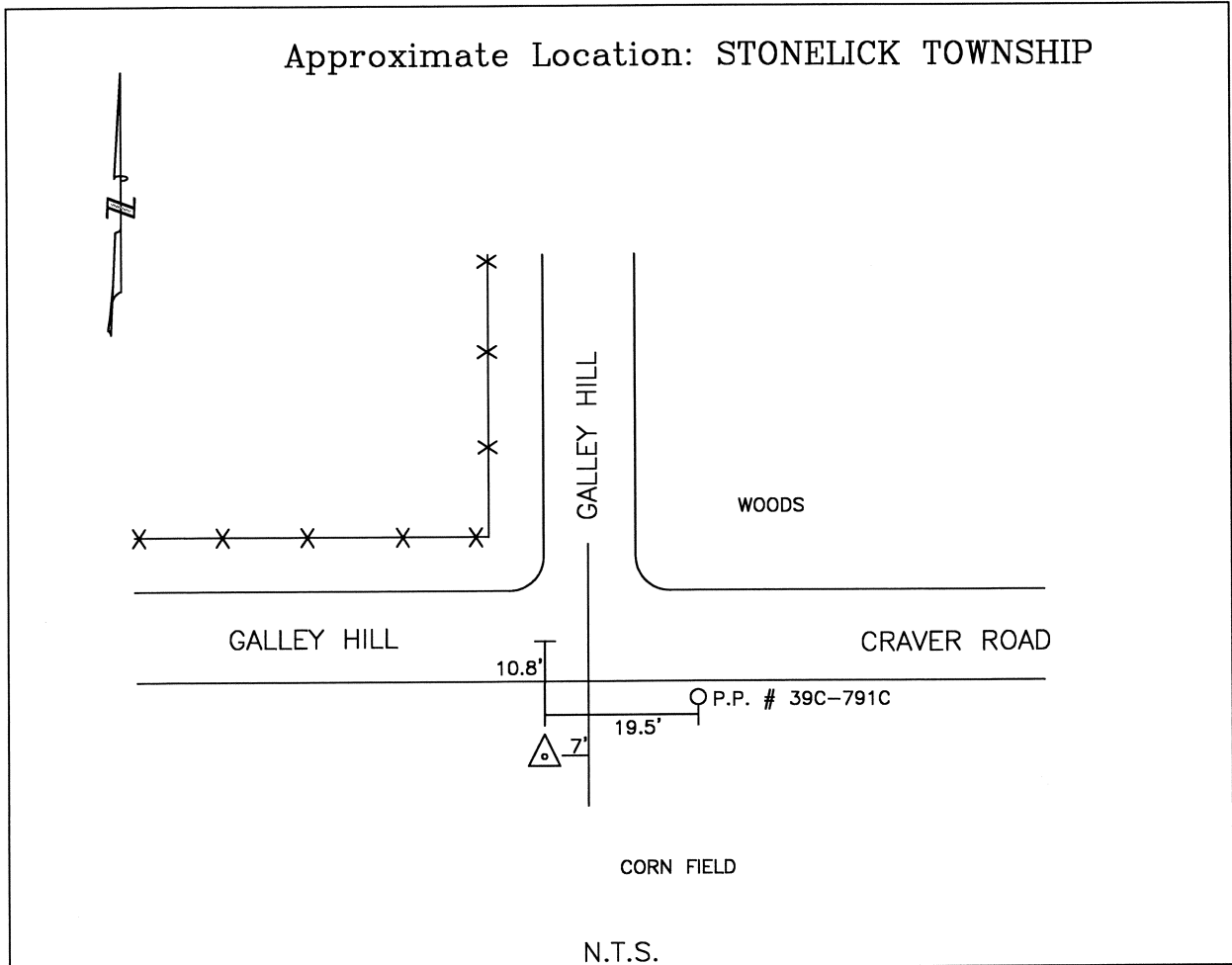




CLERMONT COUNTY ENGINEER CONTROL STATION DATA SHEET

Approximate Location: STONELICK TOWNSHIP



Station Name: 365

NAD 1983
 State Plane Zone: Ohio South 3402
 Latitude (dms) N 39 08 44.81695
 Longitude (dms) W 84 12 5.38652
 Easting in meters 452925.300
 Northing in meters 128582.588
 Easting in US survey ft 1485972.423
 Northing in US survey ft 421858.040
 Scale 0.99994453
 Convergence -1 4 46.677415

NAVD 1988
 Elevation in meters 256.277
 Elevation in feet 840.803
 Geoid96 Ht in meters -33.890
 Elevations determined with GPS

Azimuth: N.89°55'23"E. to Station 365A