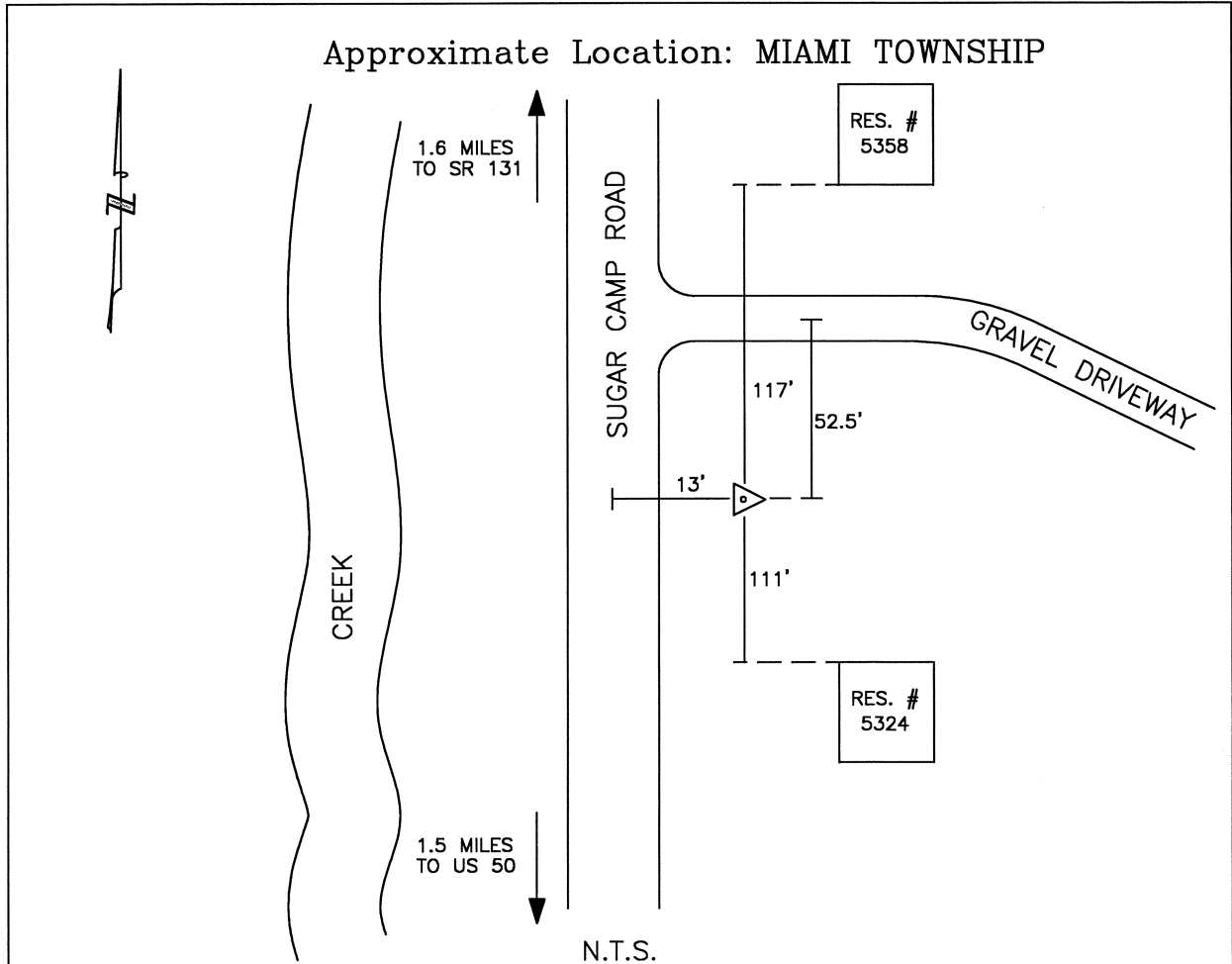




CLERMONT COUNTY ENGINEER

CONTROL STATION DATA SHEET



Station Name: 367

NAD 1983
 State Plane Zone: Ohio South 3402
 Latitude (dms) N 39 09 15.61837
 Longitude (dms) W 84 13 11.95164
 Easting in meters 451345.310
 Northing in meters 129562.510
 Easting in US survey ft 1480788.737
 Northing in US survey ft 425073.002
 Scale 0.99994392
 Convergence -1 5 28.914287

NAVD 1988
 Elevation in meters 187.546
 Elevation in feet 615.307
 Geoid96 Ht in meters -33.903
 Elevations determined with GPS

Azimuth: S.15°25'34"W. to Station 367A