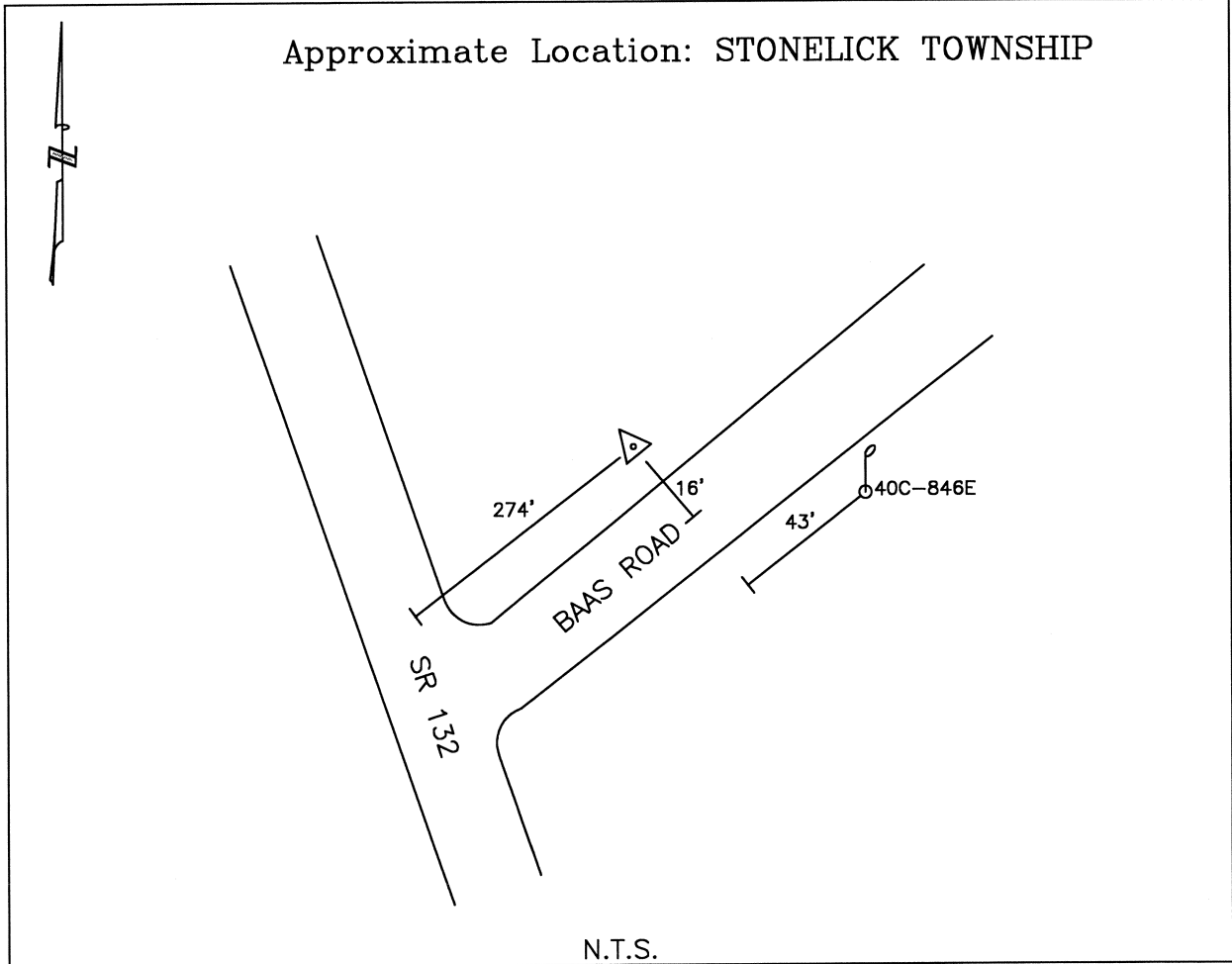




CLERMONT COUNTY ENGINEER CONTROL STATION DATA SHEET

Approximate Location: STONELICK TOWNSHIP



Station Name: 394

NAD 1983
 State Plane Zone: Ohio South 3402
 Latitude (dms) N 39 09 14.23768
 Longitude (dms) W 84 09 15.83066
 Easting in meters 457012.611
 Northing in meters 129414.022
 Easting in US survey ft 1499382.208
 Northing in US survey ft 424585.838
 Scale 0.99994395
 Convergence -1 2 59.090914

NAVD 1988
 Elevation in meters 256.597
 Elevation in feet 841.850
 Geoid96 Ht in meters -33.816
 Elevations determined with GPS

Azimuth: N.63°01'37"E. to Station 394A