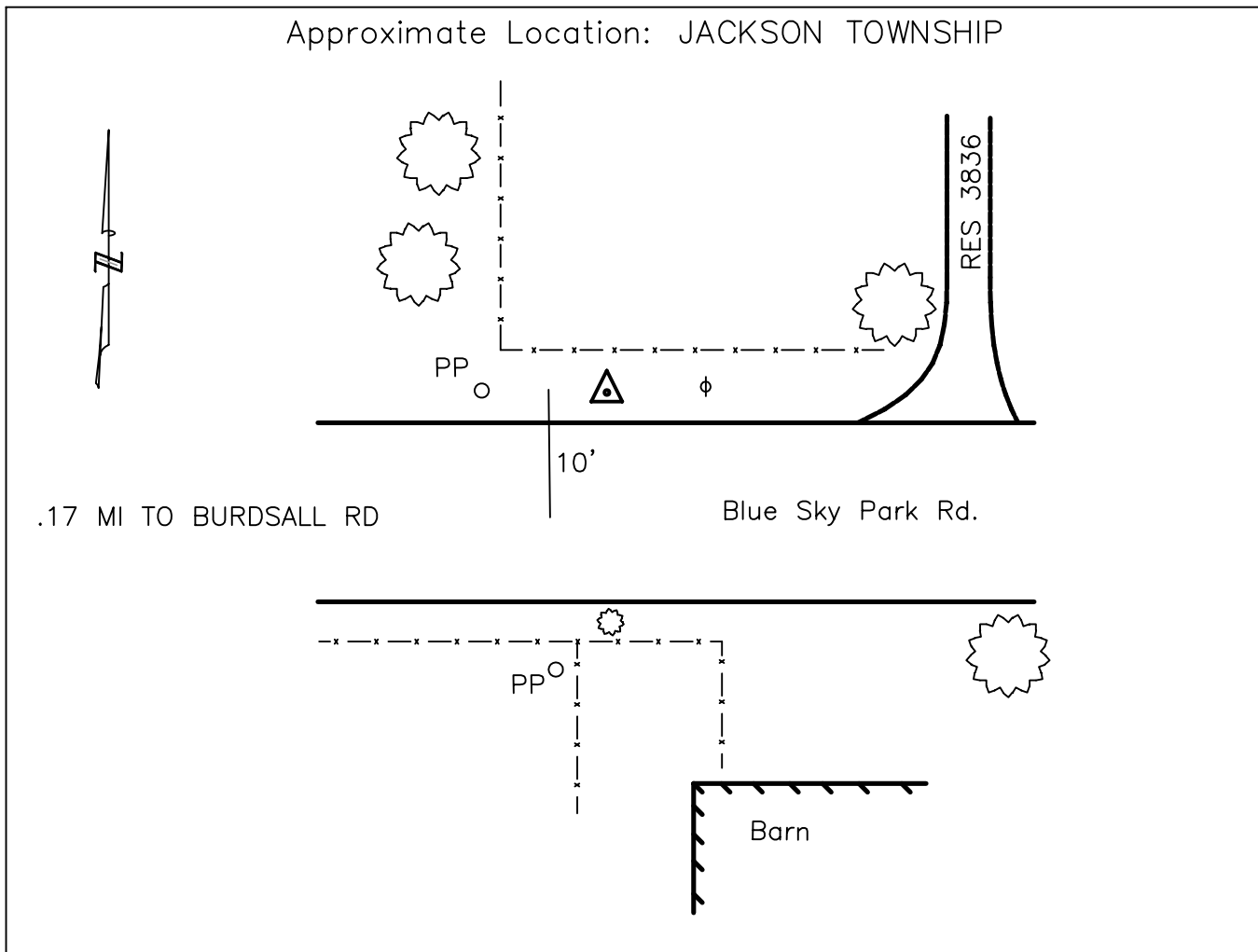




# CLERMONT COUNTY ENGINEER CONTROL STATION DATA SHEET

Approximate Location: JACKSON TOWNSHIP



Station Name: 421

NAD 1983	
State Plane Zone:	Ohio South 3402
Latitude (dms)	N 39 06 26.81945
Longitude (dms)	W 84 00 30.31443
Easting in meters	469541.720
Northing in meters	124031.167
Easting in US survey ft	1540488.126
Northing in US survey ft	406925.586
Scale	0.99994752
Convergence	-0 57 26

NAVD 1988	
Elevation in meters	274.914
Elevation in feet	901.948
Geoid03 Ht in feet	-110.020
Elevations determined with GPS	

AZIMUTH: N.75°34'18"W. TO STATION 421A