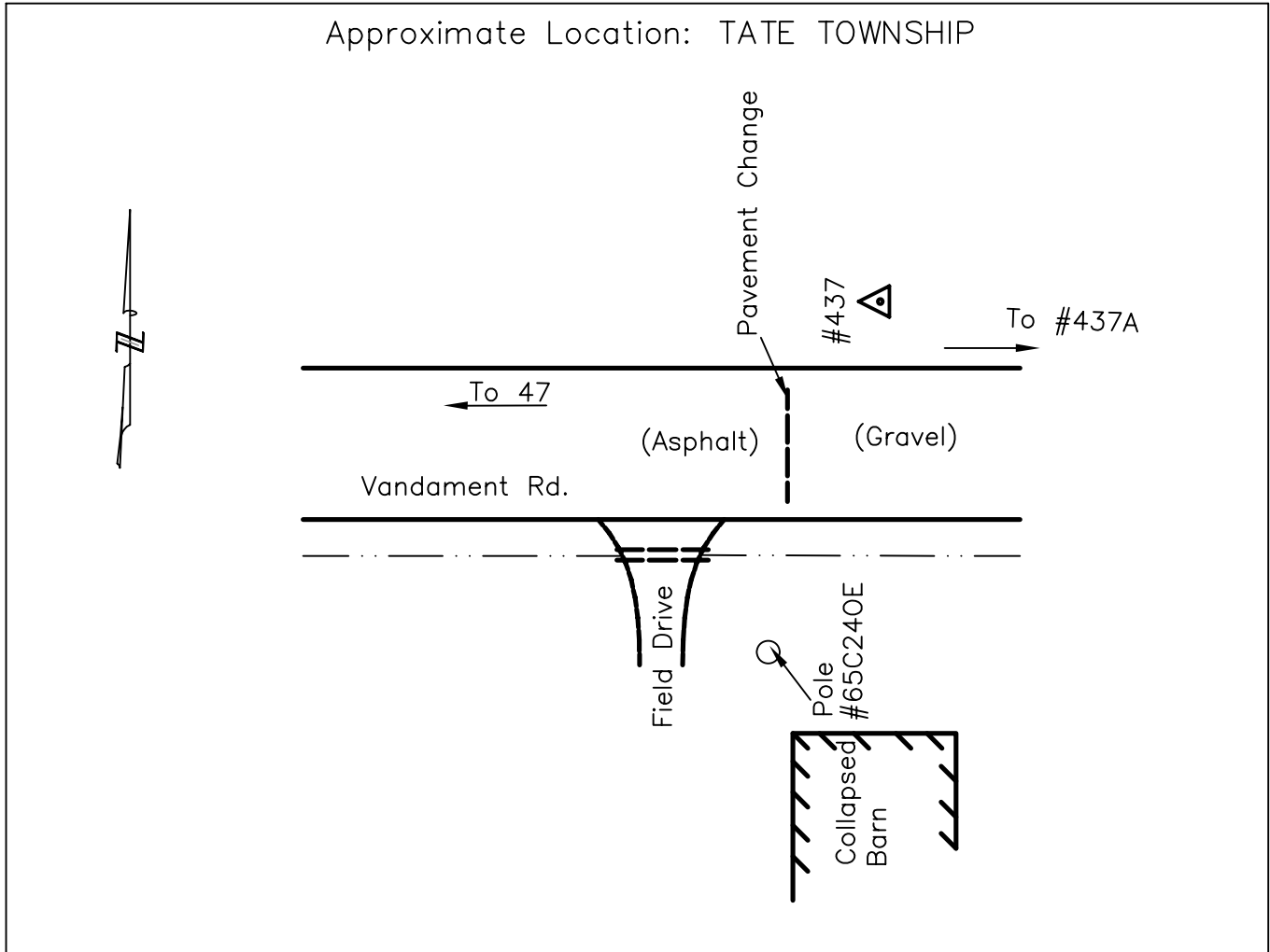




CLERMONT COUNTY ENGINEER CONTROL STATION DATA SHEET

Approximate Location: TATE TOWNSHIP



Station Name: 437

| | |
|--------------------------|------------------|
| NAD 1983 | |
| State Plane Zone: | Ohio South 3402 |
| Latitude (dms) | N 38 55 24.94722 |
| Longitude (dms) | W 84 01 59.61250 |
| Easting in meters | 467050.087 |
| Northing in meters | 103660.492 |
| Easting in US survey ft | 1532313.495 |
| Northing in US survey ft | 340092.797 |
| Scale | 0.99996804 |
| Convergence | -0 58 22 |

| | |
|--------------------------------|----------|
| NAVD 1988 | |
| Elevation in meters | 285.344 |
| Elevation in feet | 936.167 |
| Geoid03 Ht in feet | -110.290 |
| Elevations determined with GPS | |

AZIMUTH: S.83°14'13"E. TO STATION 437A