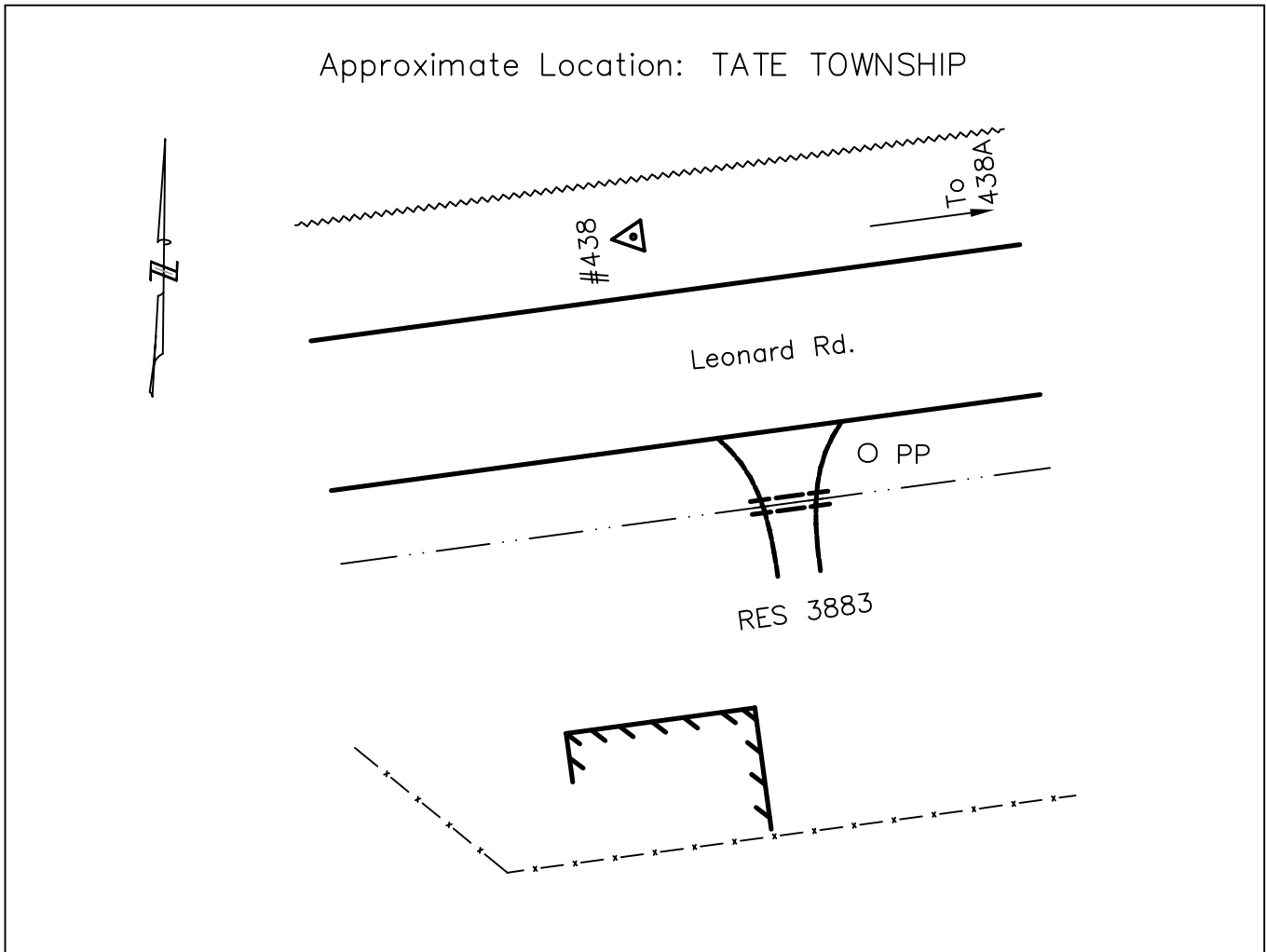




# CLERMONT COUNTY ENGINEER CONTROL STATION DATA SHEET

Approximate Location: TATE TOWNSHIP



Station Name: 438

NAD 1983	
State Plane Zone:	Ohio South 3402
Latitude (dms)	N 38 54 58.69925
Longitude (dms)	W 84 02 02.90306
Easting in meters	466957.085
Northing in meters	102852.566
Easting in US survey ft	1532008.370
Northing in US survey ft	337442.127
Scale	0.99996906
Convergence	-0 58 24

NAVD 1988	
Elevation in meters	286.364
Elevation in feet	939.512
Geoid03 Ht in feet	-110.290
Elevations determined with GPS	

AZIMUTH: N.51°05'27"E. TO STATION 438A