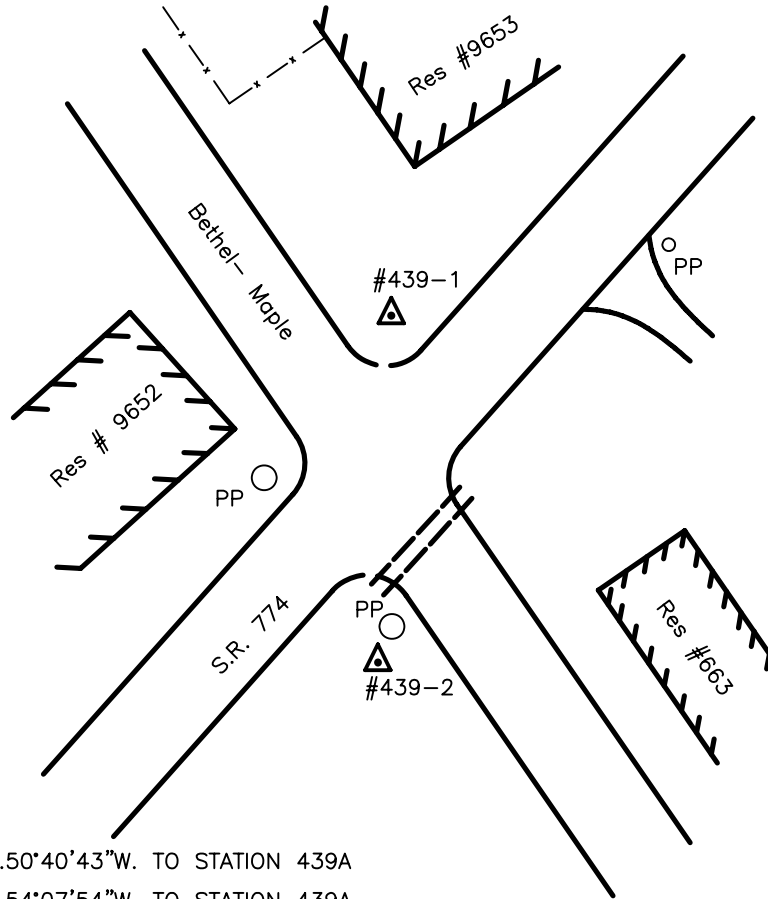




CLERMONT COUNTY ENGINEER CONTROL STATION DATA SHEET

Approximate Location: TATE TOWNSHIP



439-1 AZIMUTH: S.50°40'43"W. TO STATION 439A
 439-2 AZIMUTH: S.54°07'54"W. TO STATION 439A

Station Name: 439-1

NAD 1983
 State Plane Zone: Ohio South 3402
 Latitude (dms) N 38 54 12.54503
 Longitude (dms) W 84 02 08.68750
 Easting in meters 466793.551
 Northing in meters 101431.918
 Easting in US survey ft 1531471.843
 Northing in US survey ft 332781.219
 Scale 0.99997090
 Convergence -0 58 28

NAVD 1988
 Elevation in meters 286.573
 Elevation in feet 940.197
 Geoid03 Ht in feet -110.330
 Elevations determined with GPS

Station Name: 439-2

NAD 1983
 State Plane Zone: Ohio South 3402
 Latitude (dms) N 38 54 11.84016
 Longitude (dms) W 84 02 08.76992
 Easting in meters 466791.196
 Northing in meters 101410.220
 Easting in US survey ft 1531464.115
 Northing in US survey ft 332710.029
 Scale 0.99997093
 Convergence -0 58 28

NAVD 1988
 Elevation in meters 286.656
 Elevation in feet 940.471
 Geoid03 Ht in feet -110.320
 Elevations determined with GPS