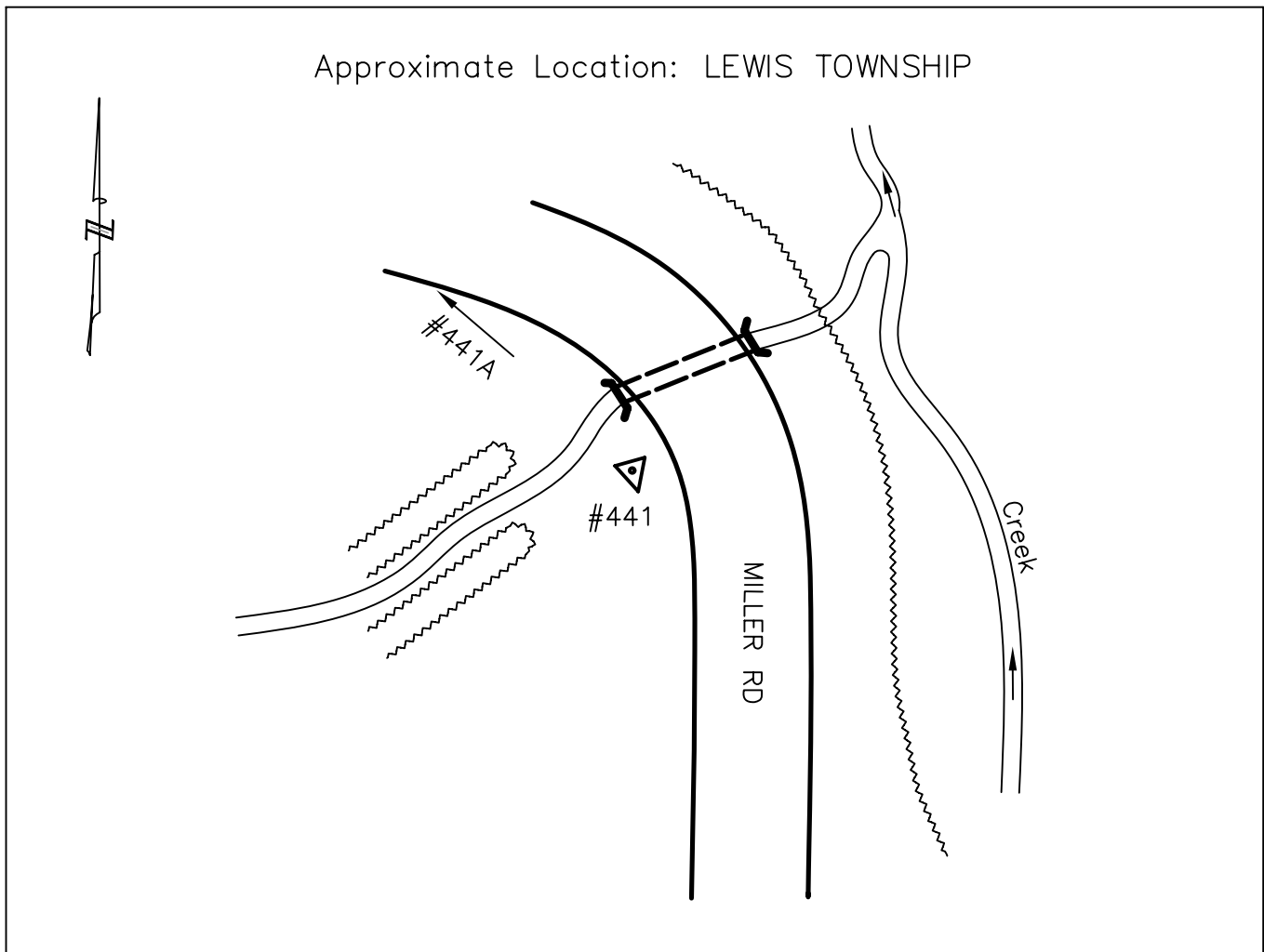




CLERMONT COUNTY ENGINEER CONTROL STATION DATA SHEET

Approximate Location: LEWIS TOWNSHIP



Station Name: 441

NAD 1983
 State Plane Zone: Ohio South 3402
 Latitude (dms) N 38 52 02.79416
 Longitude (dms) W 84 02 24.41043
 Easting in meters 466346.527
 Northing in meters 97437.927
 Easting in US survey ft 1530005.230
 Northing in US survey ft 319677.599
 Scale 0.99997634
 Convergence -0 58 38

NAVD 1988
 Elevation in meters 240.030
 Elevation in feet 787.500
 Geoid03 Ht in feet -110.410
 Elevations determined with GPS

AZIMUTH: N.72°10'43"W. TO STATION 441A