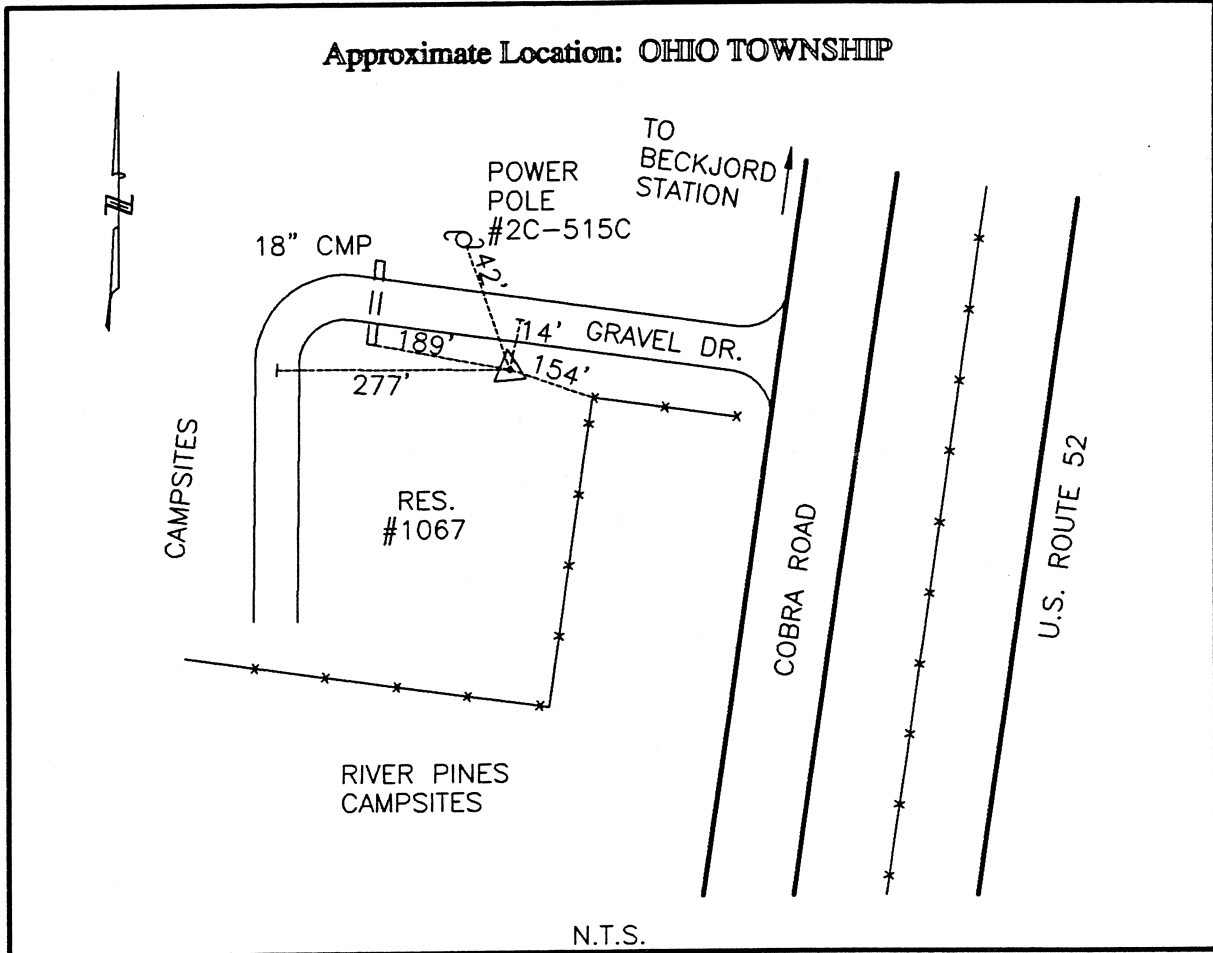




CLERMONT COUNTY ENGINEER CONTROL STATION DATA SHEET



Station Name: 55

NAD 1983 (First Order)

State Plane Zone: Ohio South 3402
 Latitude (dms) N 38 58 11.93982
 Longitude (dms) W 84 17 32.83333
 Easting in meters 444676.716
 Northing in meters 109222.842
 Easting in US survey ft 1458910.192
 Northing in US survey ft 358341.941
 Scale .99996190
 Convergence (dms) -1 8 14.448816

NAVD 1988

Elevation in meters 149.179
 Elevation in feet 489.431
 Geoid Ht. in meters -34.252
 Elevations determined with GPS

Azimuth: S 80° 31' 13" E to Station 55A.